

Suz Insulators



盘形悬式瓷绝缘子

Suspension Porcelain Insulators

顾客满意的产品和服务，永远是苏州电瓷厂有限公司的最高目标
Customers satisfaction and good servies are the top goals that SPIW always pursues.



www.suz-insulators.com

公司名称：苏州电瓷厂有限公司
Name: Suzhou Porcelain Insulator Works CO.,LTD
地 址：苏州工业园区唯亭分区春辉路20号
Address: No.20 Chunhui Road, Weiting District, SIP Suzhou
内销电话：0512-65204747; 62758157; 62758105; 62758108
外销电话：0512-62758258; 62758268; 65306046
传 真：0512-65252087; 65252289
Fax: 0512-65204704
邮 编：215122
Postcode: 215122
<http://www.spiwcn.com>

苏州电瓷厂有限公司
Suzhou Porcelain Insulator Works CO.,LTD.



公司简介

Brief Introduction

苏州电瓷厂有限公司为苏州创元投资发展(集团)公司旗下的主业企业,由在深圳证交所上市的创元科技股份有限公司控股。是一家具有七十多年历史的中国电瓷行业的重点骨干企业。

公司位于历史文化名城苏州市,本部设在中国政府与新加坡政府合作的苏州工业园区,并在

苏州高新技术产业开发区内设有支柱绝缘子分公司,是江苏省出口商品质量信得过企业、江苏省高新技术企业。公司占地面积近12万平方米,2008年末公司总资产超过3.1亿元,年产电瓷3万多吨。

公司技术力量雄厚,全部产品拥有百分之百的自主知识产权。拥有达到国际先进水平的工艺装备和齐全的检测手段,在电站、电器用瓷绝缘子上既有传统的湿法成型生产线,还有干法成型(等静压)生产线。公司通过了挪威船级社(DNV)ISO9001:2000质量管理体系的认证。产品执行GB、IEC等系列标准,并可根据用户要求执行美国、英国、澳大利亚等国标准。

公司是国家电网公司认定的330kV及以上超高压、特高压输电线路瓷绝缘子三大供货厂商之一。从二十世纪八十年代初即开始承担自~蓉、二~自、杨~淮、南~郑、鄂~赣联网、二滩送出、潜~咸III回、福~宁I、II回、淮~六、漳~长、保~房II回、公~阿~官、兰~平~乾等500kV、750kV线路;宜宾500kV变电站、恩施500kV变电站、银川东750kV变电站、青海750kV黄河变电站等国家重点输变电工程项目及鹰~厦、宝~成、大~秦、武~广、京~沪等国家重点电气化铁路基础建设。产品还大量出口美国、加拿大、欧盟、澳大利亚、巴西、委内瑞拉、南非、伊朗、韩国等20多个国家和地区,是阿海法、ABB等世界著名电气制造公司的合格供应商。长期以来“闪电”品牌及高效的工作水准赢得了客户的青睐,在国内外市场上都享有良好声誉。

以生产经营过程及质量控制为主体内容的ERP在线管理系统为实现公司承诺奠定了坚实基础——客户满意的产品和服务,永远是苏州电瓷厂有限公司的最高目标。

苏州电瓷厂有限公司产品系列:

- 550kN及以下交流盘形悬式瓷绝缘子
- 550kN及以下直流盘形悬式瓷绝缘子
- 145kV及以下线路柱式瓷绝缘子
- 11.5kV、24kV、40.5kV、72.5kV、126kV~1100kV高强度支柱瓷绝缘子
- ±400kV~±800kV户外直流支柱瓷绝缘子
- SF6断路器、GIS组合电器、变压器、互感器等用高压电器瓷套
- 8kN、12kN、16kN电气化铁路接触网用瓷绝缘子
- 城市轨道交通接触网用瓷绝缘子

Suzhou porcelain insulator works CO.LTD (SPIW) is located in Suzhou, China—a famous historic and cultural city of the world. With its predominant environment of economy, humanity and geography, Suzhou created advanced external conditions for the developing of SPIW. SPIW was first built by the end of 1930'. By the year 2006 SPIW had invested more than 30 million US dollars for setting up two new production bases separately in SIP and SND which cover 120,000 square meters. By the end of 2008 SPIW had reach more than 46 million US dollars of its total assets. SPIW has accumulated more than 70 years' porcelain insulators manufacturing technologies and experiences. Especially after the first-stage and second-stage reconstructions, with huge breakthrough in the areas of equipments and technologies, SPIW has developed as a large-scale, comprehensive porcelain insulator manufactory.

SPIW has a strong force of technology. The products can be manufactured according to standards of IEC, ANSI, BS, AS and DIN etc. SPIW has both wet process production lines and iso-static pressing production lines for Station Post Insulators and hollows. At the present stage, the annually capacity of SPIW can reach 300,000 tons of all kinds of insulators.

SPIW has passed the audit of ISO9001:2000 Quality System by DNV(Det Norske veritas). And it has obtained "Recommended Company Certificate of main equipment (materials) for 330kV-500kV transmission lines", and has been qualified by National Power Grid Company to participate the centralized biddings of 330kV over transmission line projects.

High quality, wide range of products and high working efficiency has won a lot of clients home and abroad, SPIW exports products to North America, South America, EU, Australia, Southeast Asia, Africa etc.

Customers' satisfaction and good services are the top goals that SPIW always pursues.

Series products of SPIW:

- 550kN and below A.C. Disc Porcelain Insulators
- 550kN and below D.C. Disc Porcelain Insulators
- 145kV and below Line Post Porcelain Insulators
- 11.5kV, 24kV, 40.5kV, 72.5kV, 126kV, 220kV, 330kV, 550kV and 1100kV High Voltage Station Post Insulators
- ±400kV~±800kV Outdoor D.C. Station Post Insulators
- SF₆ circuit breaker hollow insulators, GIS composite apparatus hollow insulators, mutual inductor hollow insulators, transformer hollow insulators etc

- 8kN, 12kN, 16kN Solid Core Porcelain Insulators for Electrified Railway
- Solid Core Porcelain Insulators for City Subway

Manufacture Process and Equipments 制造工艺设备



(1) 球磨
Ball Mill



(2) 混合Mixing



(4) 榨泥Filter Pressing



(3) 过筛除铁
Sieving And Electric Magnetic Filtering



(5) 真空挤出
Vacuum Extruding



(6) 成型
Shapping



(7) 烘干 Drying



(8) 上釉 Glazing



(9) 焙烧 Firing



(10) 检验 Inspection



(11) 试验 Test



产品简介

Product Introduction

盘形悬式瓷绝缘子（以下简称绝缘子），用于高压架空输电线路中的绝缘和固定导线。一般由绝缘子元件组装成绝缘子串用于不同电压等级的线路上。绝缘子按其使用的环境和地区，可分为普通型和耐污型，其中耐污型产品根据伞形结构的不同又分为双层、三层伞耐污型和钟罩伞耐污型三种；按绝缘子连接方式可分为球型连接和槽型连接。绝缘子铁帽和钢脚表面均采用热浸镀锌进行防腐处理，锌层厚度除按标准外，还可根据客户要求予以加厚；此外，对在腐蚀比较严重地区使用的绝缘子，为减轻钢脚近水泥胶合剂附近的腐蚀，可根据客户要求要求在钢脚上增加锌套。W和R型锁紧销均采用锡青铜或不锈钢制造，具有良好的弹性及防腐性。双层伞及三层伞耐污悬式瓷绝缘子，伞形开放，爬电距离较大，裙内光滑，由于产品设计采用空气流无阻原理设计，具有风雨自扫自洁性能好，积污速率低，易清扫等特点。钟罩伞耐污悬式瓷绝缘子，爬电距离大，伞棱间距较大，人工污闪试验电压较高。架空避雷线用悬式瓷绝缘子，也称地线绝缘子。用于高压或超高压输电线路中悬挂避雷线。在正常工作电压下，使避雷线与地绝缘，既可有效地减少输电线路能量损耗，又可利用避雷线进行通讯。在大气电压下，保护间隙导通，使避雷线接地，有效地保护输电线路及设备免遭损坏。釉色：白色、棕色、浅灰色、天兰色等。

Disc Insulators are used in the transmission and distribution line of electrical power. Usually discs bolted together to form a string for the different voltage level line. According to the polluted conditions or regions, disc insulators can be divided into normal type and Antipollution-type. According to the coupling, it can be divided into Ball, Socket type and Clevis type. All metal parts assembled are hot dip galvanized. The coating thickness can be increased or zinc sleeve can be added as per customers' requirements. 'W' & 'R' clips are made of bronze or stainless steel which is stretchy and anti-corrosive. Glazed color available: white, brown, gray, blue and etc.

● 技术标准 Standard for Disc

盘形悬式瓷绝缘子符合GB/T1001.1《标称电压大于1000V的架空线路绝缘子 第一部分 交流系统用瓷或玻璃绝缘子元件—定义，试验方法和判定准则》和GB/T 7253《盘形悬式绝缘子串元件尺寸与特性》之规定或同等国际标准，如IEC、ANSI、AS、BS等。架空避雷线用盘形悬式瓷绝缘子符合JB/T 9680《高压架空线路绝缘地线用盘形悬式瓷绝缘子》之规定。

In accordance with GB/T1001.1<<Insulators---Porcelain and glass for overhead power lines Voltages greater than 1000V a.c.Part1<<test methods and determine criteria>>, GB/T7253<<Dimensions and Characteristics for the unit of Suspension strings>>. Meantime, complying with IEC, ANSI, AS, BS etc.



目录 Contents

GB/T 7253, IEC60305:

| | |
|--|-------|
| 交流普通型 AC NormalType | 1-6 |
| 交流防污型（钟罩型） AC Anti-Pollution Type(Under Rib) | 7-8 |
| 交流防污型（双伞型） AC Anti-Pollution Type(Two Outer-rib) | 9-13 |
| 交流防污型（大爬距双伞型） AC Anti-Pollution Type(Two Outer-rib) | 14-15 |
| 交流防污型（三伞型） AC Anti-Pollution Type(Three Outer-rib) | 16-18 |
| 交流防污型（草帽型） Aerodynamic Suspension Porcelain Insulator | 19 |

ANSI C 29.2:

| | |
|------------------------------|-------|
| 交流普通型 AC NormalType | 20-21 |
|------------------------------|-------|

IEC 383 BS 137:

| | |
|------------------------------|----|
| 交流普通型 AC NormalType | 22 |
|------------------------------|----|

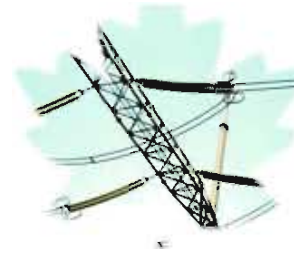
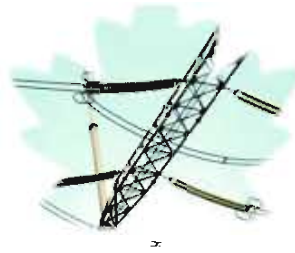
JB/T 9680:

| | |
|---|----|
| 盘形地线瓷绝缘子 Disc Porcelain Insulator for Ground Overhead LEAD | 23 |
|---|----|

GB/T 19443:

| | |
|---|----|
| 直流防污型（钟罩型） DC Anti-Pollution Type(Under Rib) | 24 |
| 直流防污型（双伞型） DC Anti-Pollution Type(Two Outer-rib) | 25 |
| 直流防污型（三伞型） DC Anti-Pollution Type(Three Outer-rib) | 26 |

交流普通型 AC Normal Type



交流普通型 AC Normal Type

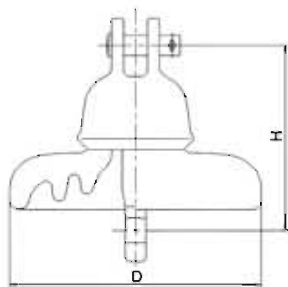


图1 (Fig. 1)

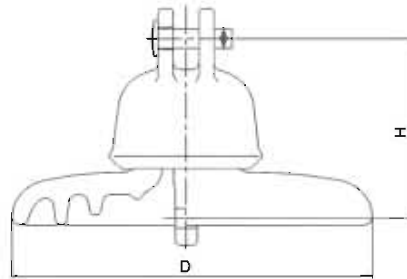
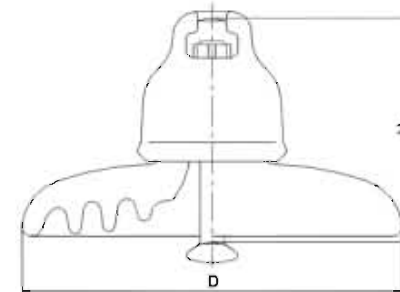


图2 (Fig. 2)

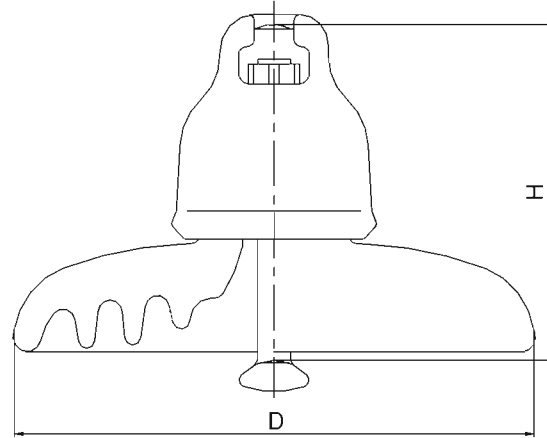
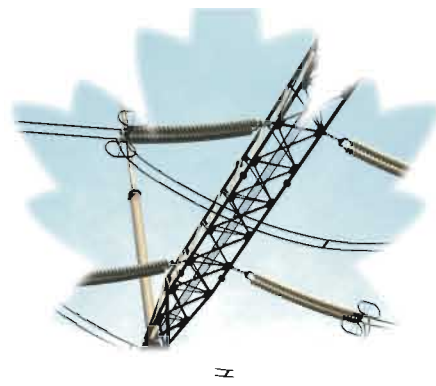


| IEC Designation | U40C | | U70C | | U120C |
|---|------------------------|--------|----------|----------|-----------|
| 参考型号 Reference No. | U40C/140 | | U70C/146 | U70C/146 | U120C/146 |
| 产品型号 Type | XP-40C | | XP3-70C | XP6-70C | XP-120C |
| 工厂代号 Cat No. | 24005 | | 24014 | 24035 | 24034 |
| 额定机电破坏负荷(kN) Rated M&E Failing Load | 40 | | 70 | 70 | 120 |
| 图号 Fig. No. | 1 | | 2 | 2 | 2 |
| 公称直径 D(mm) Nominal Diameter | 190 | | 255 | 255 | 255 |
| 公称结构高度 H(mm) Nominal Unit Spacing | 140 | | 146 | 146 | 146 |
| 公称爬电距离(mm) Nominal Creepage Distance | 200 | | 295 | 360 | 295 |
| 连接标记(mm) Ball & Socket Size | 16C | | 16C | 16C | 16C |
| 逐个拉伸负荷(kN) Routine Tensile Load | 20 | | 35 | 35 | 60 |
| 打击破坏负荷(N·cm) Impact Strength | 565 | | 565 | 565 | 678 |
| 最小闪络电压(kV) Minimum Flashover Voltage | 工频 Power-frequency | 干 Dry | 65 | 78 | 78 |
| | | 湿 Wet | 35 | 45 | 45 |
| | 50%雷电 Critical Impulse | 正 Pos. | 100 | 120 | 120 |
| | | 负 Neg. | 100 | 125 | 125 |
| 耐受电压(kV) Withstand Voltage | 工频 Power-frequency | 干 Dry | 55 | 70 | 70 |
| | | 湿 Wet | 30 | 40 | 40 |
| | 雷电冲击 Critical Impulse | 85 | 100 | 100 | |
| 工频击穿电压(kV) Power-frequency Puncture Voltage | 90 | | 110 | 110 | 110 |
| 重量(kg) Net Weight(approx.) | 3.3 | | 5.7 | 6.0 | 6.3 |

www.suz-insulators.com

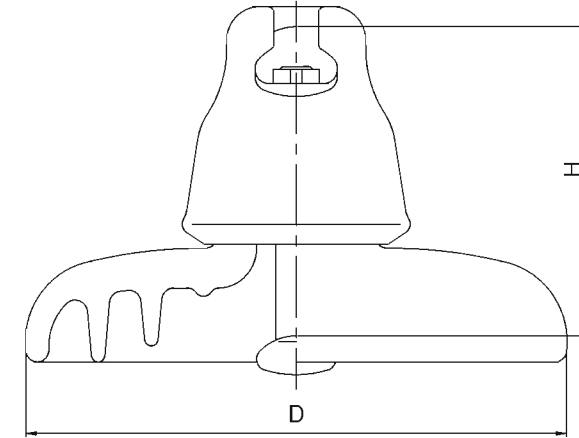
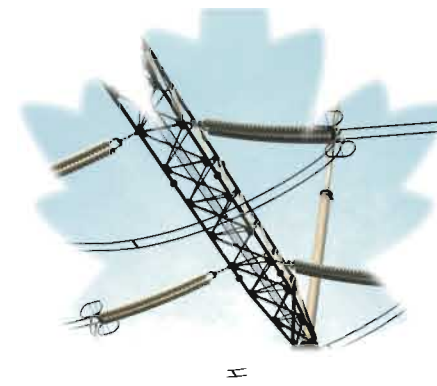
| IEC Designation | U70BS | U70BL | | | |
|---|------------------------|----------|----------|----------|----------|
| 参考型号 Reference No. | U70B/127 | U70B/146 | U70B/146 | U70B/146 | U70B/146 |
| 产品型号 Type | XP1-70 | XP3-70 | XP4-70 | XP5-70 | XP6-70 |
| 工厂代号 Cat No. | 24011 | 24013(R) | 24022(R) | 24023(R) | 24026(R) |
| 额定机电破坏负荷(kN) Rated M&E Failing Load | 70 | 70 | 70 | 70 | 70 |
| 公称直径 D(mm) Nominal Diameter | 255 | 255 | 270 | 255 | 255 |
| 公称结构高度 H(mm) Nominal Unit Spacing | 127 | 146 | 146 | 146 | 146 |
| 公称爬电距离(mm) Nominal Creepage Distance | 295 | 295 | 330 | 330 | 360 |
| 连接标记(mm) Ball & Socket Size | 16A | 16B(A) | 16B(A) | 16B(A) | 16B(A) |
| 锁紧销型式 Locking Device | R | W(R) | W(R) | W(R) | W(R) |
| 逐个拉伸负荷(kN) Routine Tensile Load | 35 | 35 | 35 | 35 | 35 |
| 打击破坏负荷(N·cm) Impact Strength | 565 | 565 | 565 | 565 | 565 |
| 最小闪络电压(kV) Minimum Flashover Voltage | 工频 Power-frequency | 干 Dry | 78 | 78 | 78 |
| | | 湿 Wet | 45 | 45 | 45 |
| | 50%雷电 Critical Impulse | 正 Pos. | 120 | 120 | 120 |
| | | 负 Neg. | 125 | 125 | 125 |
| 耐受电压(kV) Withstand Voltage | 工频 Power-frequency | 干 Dry | 70 | 70 | 70 |
| | | 湿 Wet | 40 | 40 | 40 |
| | 雷电冲击 Critical Impulse | 100 | 100 | 100 | |
| 工频击穿电压(kV) Power-frequency Puncture Voltage | 110 | 110 | 110 | 110 | 120 |
| 重量(kg) Net Weight(approx.) | 5.6 | 5.6 | 5.8 | 5.8 | 8.0 |

交流普通型 AC Normal Type



| IEC Designation | | U80BL | | U100BL | | U120B | |
|--|------------------------|----------|--------|-----------|----------|-----------|----------|
| 参考型号 Reference No. | | U80B/146 | | U100B/146 | | U120B/146 | |
| 产品型号 Type | | XP-80 | XP1-80 | XP-100 | XP2-100 | XP-120 | XP1-120 |
| 工厂代号 Cat No. | | 24028 | 24017 | 24010A(R) | 24020(R) | 24012(R) | 24029(R) |
| 额定机电破坏负荷(kN) Rated M&E Failing Load | | 80 | 80 | 100 | 100 | 120 | 120 |
| 公称直径 D(mm) Nominal Diameter | | 255 | 255 | 255 | 255 | 255 | 255 |
| 公称结构高度 H(mm) Nominal Unit Spacing | | 146 | 146 | 146 | 146 | 146 | 146 |
| 公称爬电距离(mm) Nominal Creepage Distance | | 295 | 320 | 295 | 340 | 295 | 330 |
| 连接标记(mm) Ball & Socket Size | | 16B | 16B | 16B(A) | 16B(A) | 16B(A) | 16B(A) |
| 锁紧销型式 Locking Device | | W | W | W(R) | W(R) | W(R) | W(R) |
| 逐个拉伸负荷(kN) Routine Tensile Load | | 40 | 40 | 50 | 50 | 60 | 60 |
| 打击破坏负荷(N·cm) Impact Strength | | 565 | 565 | 678 | 678 | 678 | 678 |
| 最小闪络电压(kV) Minimum Flashover Voltage | 工频 Power-frequency | 干 Dry | 78 | 78 | 78 | 78 | 78 |
| | | 湿 Wet | 45 | 45 | 45 | 45 | 45 |
| | 50%雷电 Critical Impulse | 正 Pos. | 120 | 120 | 120 | 120 | 120 |
| | | 负 Neg. | 125 | 125 | 125 | 125 | 125 |
| 耐受电压(kV) Withstand Voltage | 工频 Power-frequency | 干 Dry | 70 | 70 | 70 | 70 | 70 |
| | | 湿 Wet | 40 | 40 | 40 | 40 | 40 |
| | 雷电冲击 Critical Impulse | 100 | 100 | 100 | 100 | 100 | |
| 工频击穿电压(kV) Power-frequency Puncture Voltage | | 110 | 110 | 110 | 120 | 110 | 120 |
| 重量(kg) Net Weight(approx.) | | 5.6 | 5.8 | 5.7 | 5.85 | 6.25 | 6.9 |

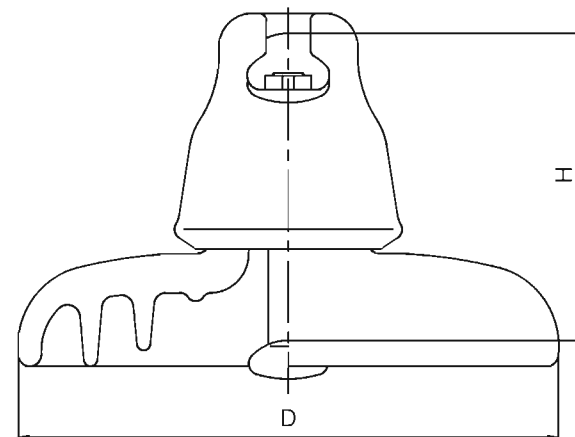
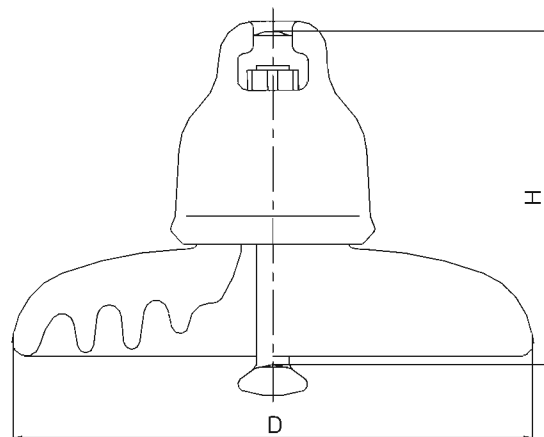
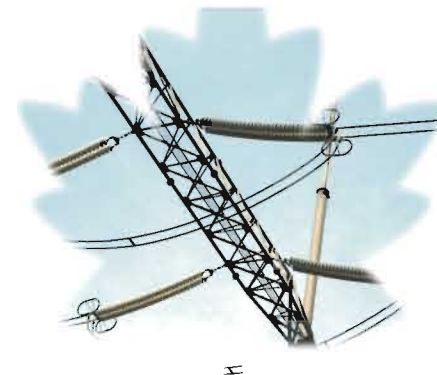
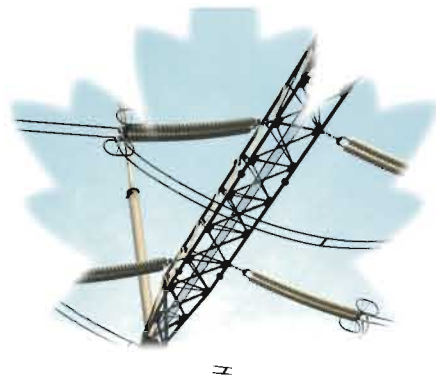
交流普通型 AC Normal Type



| IEC Designation | | U160BS | | U160BM | | U160BL |
|--|------------------------|-----------|----------|-----------|----------|-----------|
| 参考型号 Reference No. | | U160B/146 | | U160B/155 | | U160B/170 |
| 产品型号 Type | | XP1-160 | XP2-160 | XP3-160 | XP5-160 | XP4-160 |
| 工厂代号 Cat No. | | 24049(R) | 24067(R) | 24016(R) | 24027(R) | 24025(R) |
| 额定机电破坏负荷(kN) Rated M&E Failing Load | | 160 | 160 | 160 | 160 | 160 |
| 公称直径 D(mm) Nominal Diameter | | 255 | 280 | 280 | 280 | 280 |
| 公称结构高度 H(mm) Nominal Unit Spacing | | 146 | 146 | 155 | 155 | 170 |
| 公称爬电距离(mm) Nominal Creepage Distance | | 325 | 325 | 360 | 380 | 405 |
| 连接标记(mm) Ball & Socket Size | | 20 | 20 | 20 | 20 | 20 |
| 锁紧销型式 Locking Device | | W(R) | W(R) | W(R) | W(R) | W(R) |
| 逐个拉伸负荷(kN) Routine Tensile Load | | 80 | 80 | 80 | 80 | 80 |
| 打击破坏负荷(N·cm) Impact Strength | | 1017 | 1017 | 1017 | 1017 | 1017 |
| 最小闪络电压(kV) Minimum Flashover Voltage | 工频 Power-frequency | 干 Dry | 78 | 80 | 80 | 80 |
| | | 湿 Wet | 45 | 47 | 47 | 47 |
| | 50%雷电 Critical Impulse | 正 Pos. | 120 | 125 | 125 | 125 |
| | | 负 Neg. | 125 | 130 | 130 | 130 |
| 耐受电压(kV) Withstand Voltage | 工频 Power-frequency | 干 Dry | 70 | 75 | 75 | 75 |
| | | 湿 Wet | 40 | 45 | 45 | 45 |
| | 雷电冲击 Critical Impulse | 100 | 105 | 105 | 105 | |
| 工频击穿电压(kV) Power-frequency Puncture Voltage | | 110 | 110 | 110 | 120 | 110 |
| 重量(kg) Net Weight(approx.) | | 7.3 | 8.2 | 8.4 | 8.8 | 9.2 |

www.suz-insulators.com

交流普通型 AC Normal Type



| IEC Designation | | U80BL | | U100BL | | U120B | |
|---|------------------------|----------|--------|-----------|----------|-----------|----------|
| 参考型号 Reference No. | | U80B/146 | | U100B/146 | | U120B/146 | |
| 产品型号 Type | | XP-80 | XP1-80 | XP-100 | XP2-100 | XP-120 | XP1-120 |
| 工厂代号 Cat No. | | 24028 | 24017 | 24010A(R) | 24020(R) | 24012(R) | 24029(R) |
| 额定机电破坏负荷(kN) Rated M&E Failing Load | | 80 | 80 | 100 | 100 | 120 | 120 |
| 公称直径 D(mm) Nominal Diameter | | 255 | 255 | 255 | 255 | 255 | 255 |
| 公称结构高度 H(mm) Nominal Unit Spacing | | 146 | 146 | 146 | 146 | 146 | 146 |
| 公称爬电距离(mm) Nominal Creepage Distance | | 295 | 320 | 295 | 340 | 295 | 330 |
| 连接标记(mm) Ball & Socket Size | | 16B | 16B | 16B(A) | 16B(A) | 16B(A) | 16B(A) |
| 锁紧销型式 Locking Device | | W | W | W(R) | W(R) | W(R) | W(R) |
| 逐个拉伸负荷(kN) Routine Tensile Load | | 40 | 40 | 50 | 50 | 60 | 60 |
| 打击破坏负荷(N·cm) Impact Strength | | 565 | 565 | 678 | 678 | 678 | 678 |
| 最小闪络电压(kV) Minimum Flashover Voltage | 工频 Power-frequency | 干 Dry | 78 | 78 | 78 | 78 | 78 |
| | | 湿 Wet | 45 | 45 | 45 | 45 | 45 |
| | 50%雷电 Critical Impulse | 正 Pos. | 120 | 120 | 120 | 120 | 120 |
| | | 负 Neg. | 125 | 125 | 125 | 125 | 125 |
| 耐受电压(kV) Withstand Voltage | 工频 Power-frequency | 干 Dry | 70 | 70 | 70 | 70 | 70 |
| | | 湿 Wet | 40 | 40 | 40 | 40 | 40 |
| | 雷电冲击 Critical Impulse | 100 | 100 | 100 | 100 | 100 | |
| 工频击穿电压(kV) Power-frequency Puncture Voltage | | 110 | 110 | 110 | 120 | 110 | 120 |
| 重量(kg) Net Weight(approx.) | | 5.6 | 5.8 | 5.7 | 5.85 | 6.25 | 6.9 |

交流普通型 AC Normal Type

www.suz-insulators.com

| IEC Designation | | U160BS | | U160BM | | U160BL |
|---|------------------------|-----------|----------|-----------|----------|-----------|
| 参考型号 Reference No. | | U160B/146 | | U160B/155 | | U160B/170 |
| 产品型号 Type | | XP1-160 | XP2-160 | XP3-160 | XP5-160 | XP4-160 |
| 工厂代号 Cat No. | | 24049(R) | 24067(R) | 24016(R) | 24027(R) | 24025(R) |
| 额定机电破坏负荷(kN) Rated M&E Failing Load | | 160 | 160 | 160 | 160 | 160 |
| 公称直径 D(mm) Nominal Diameter | | 255 | 280 | 280 | 280 | 280 |
| 公称结构高度 H(mm) Nominal Unit Spacing | | 146 | 146 | 155 | 155 | 170 |
| 公称爬电距离(mm) Nominal Creepage Distance | | 325 | 325 | 360 | 380 | 405 |
| 连接标记(mm) Ball & Socket Size | | 20 | 20 | 20 | 20 | 20 |
| 锁紧销型式 Locking Device | | W(R) | W(R) | W(R) | W(R) | W(R) |
| 逐个拉伸负荷(kN) Routine Tensile Load | | 80 | 80 | 80 | 80 | 80 |
| 打击破坏负荷(N·cm) Impact Strength | | 1017 | 1017 | 1017 | 1017 | 1017 |
| 最小闪络电压(kV) Minimum Flashover Voltage | 工频 Power-frequency | 干 Dry | 78 | 80 | 80 | 80 |
| | | 湿 Wet | 45 | 47 | 47 | 47 |
| | 50%雷电 Critical Impulse | 正 Pos. | 120 | 125 | 125 | 125 |
| | | 负 Neg. | 125 | 130 | 130 | 130 |
| 耐受电压(kV) Withstand Voltage | 工频 Power-frequency | 干 Dry | 70 | 75 | 75 | 75 |
| | | 湿 Wet | 40 | 45 | 45 | 45 |
| | 雷电冲击 Critical Impulse | 100 | 105 | 105 | 105 | |
| 工频击穿电压(kV) Power-frequency Puncture Voltage | | 110 | 110 | 110 | 120 | 110 |
| 重量(kg) Net Weight(approx.) | | 7.3 | 8.2 | 8.4 | 8.8 | 9.2 |

交流普通型 AC Normal Type

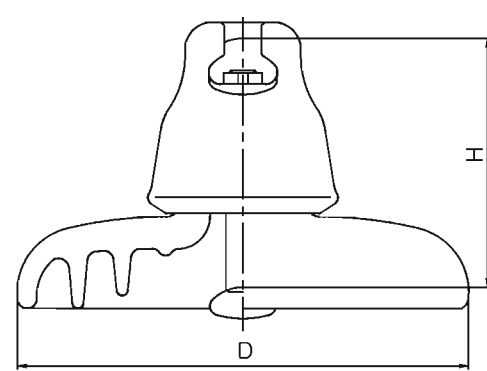
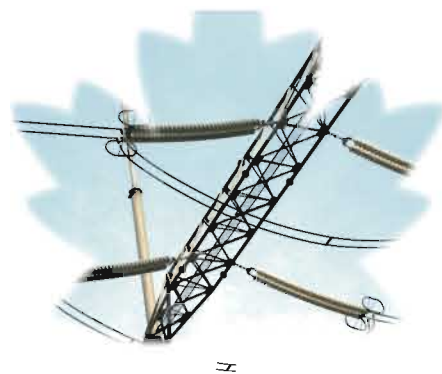


图1 (Fig. 1)

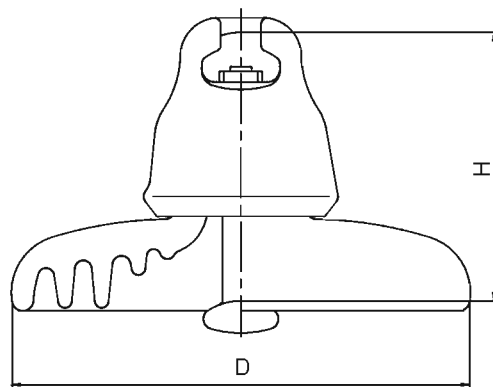
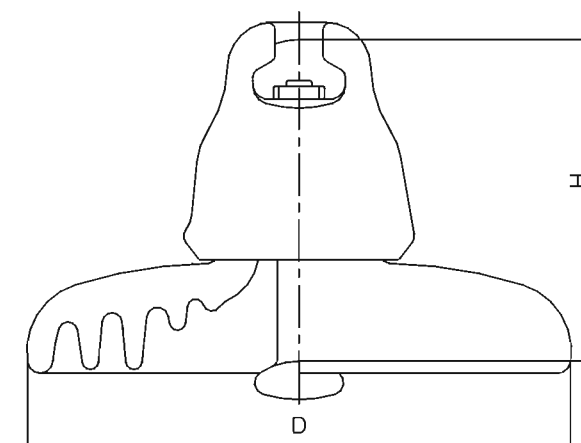
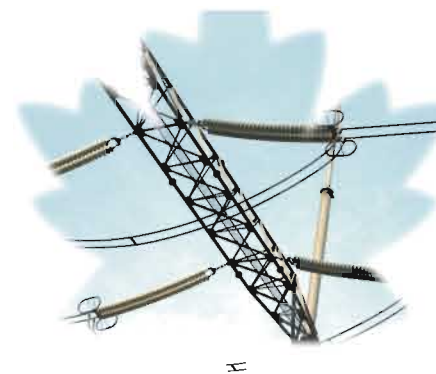


图2 (Fig. 2)

| IEC Designation | | U210B | | | | U240B |
|---|------------------------|-----------|--------|------------|------------|-----------|
| 参考型号 Reference No. | | U210B/170 | | | | U240B/170 |
| 产品型号 Type | | XP1-210 | XP-210 | XP4-210 | XP2-210 | XP-240 |
| 工厂代号 Cat No. | | 24021 | 24021A | 24060(A) | 24036(A) | 24044 |
| 额定机电破坏负荷(kN) Rated M&E Failing | | 210 | 210 | 210 | 210 | 240 |
| 图号 Fig. No. | | 1 | 1 | 1 | 2 | 2 |
| 公称直径 D(mm) Nominal Diameter | | 280 | 280 | 280 | 280 | 280 |
| 公称结构高度 H(mm) Nominal Unit Spacing | | 170 | 170 | 170 | 170 | 170 |
| 公称爬电距离 (mm) Nominal Creepage | | 335 | 335 | 380 | 405 | 405 |
| 连接标记(mm) Ball & Socket Size | | 20 | 24 | 20(24) | 20(24) | 24 |
| 锁紧销型式 Locking Device | | R | R | R | R | R |
| 逐个拉伸负荷(kN) Routine Tensile Load | | 105 | 105 | 105 | 105 | 120 |
| 打击破坏负荷(N·cm) Impact Strength | | 1017 | 1017 | 1017 | 1017 | 1017 |
| 最小闪络电压(kV) Minimum Flashover Voltage | 工频 Power-frequency | 干 Dry | 80 | 80 | 80 | 80 |
| | | 湿 Wet | 47 | 47 | 47 | 47 |
| | 50%雷电 Critical Impulse | 正 Pos. | 125 | 125 | 125 | 125 |
| | | 负 Neg. | 130 | 130 | 130 | 130 |
| 耐受电压(kV) Withstand Voltage | 工频 Power-frequency | 干 Dry | 75 | 75 | 75 | 75 |
| | | 湿 Wet | 45 | 45 | 45 | 45 |
| | 雷电冲击 Critical Impulse | 105 | 105 | 105 | 105 | |
| 工频击穿电压(kV) Power-frequency Puncture Voltage | | 120 | 120 | 120 | 120 | 120 |
| 重量(kg) Net Weight(approx.) | | 9.4 | 9.6 | 10.0(10.2) | 10.6(10.8) | 11.2 |

交流普通型 AC Normal Type



| IEC Designation | | U300B | | U420B | U530B | U550B |
|---|------------------------|-----------|---------|-----------|-----------|-----------|
| 参考型号 Reference No. | | U300B/195 | | U420B/205 | U530B/240 | U550B/240 |
| 产品型号 Type | | XP-300 | XP1-300 | XP-420 | XP-530 | XP-550 |
| 工厂代号 Cat No. | | 24030 | 24085 | 24042 | 24050A | 24050 |
| 额定机电破坏负荷(kN) Rated M&E Failing | | 300 | 300 | 420 | 530 | 550 |
| 公称直径 D(mm) Nominal Diameter | | 320 | 320 | 340 | 380 | 380 |
| 公称结构高度 H(mm) Nominal Unit Spacing | | 195 | 195 | 205 | 240 | 240 |
| 公称爬电距离 (mm) Nominal Creepage | | 370 | 480 | 550 | 700 | 700 |
| 连接标记(mm) Ball & Socket Size | | 24 | 24 | 28 | 32 | 32 |
| 锁紧销型式 Locking Device | | R | R | R | R | R |
| 逐个拉伸负荷(kN) Routine Tensile Load | | 150 | 150 | 210 | 265 | 265 |
| 打击破坏负荷(N·cm) Impact Strength | | 1017 | 1017 | 1017 | 1017 | 1017 |
| 最小闪络电压(kV) Minimum Flashover Voltage | 工频 Power-frequency | 干 Dry | 90 | 90 | 95 | 100 |
| | | 湿 Wet | 53 | 53 | 55 | 60 |
| | 50%雷电 Critical Impulse | 正 Pos. | 135 | 135 | 140 | 145 |
| | | 负 Neg. | 140 | 140 | 145 | 155 |
| 耐受电压(kV) Withstand Voltage | 工频 Power-frequency | 干 Dry | 85 | 85 | 90 | 95 |
| | | 湿 Wet | 50 | 50 | 50 | 55 |
| | 雷电冲击 Critical Impulse | 110 | 110 | 130 | 135 | |
| 工频击穿电压(kV) Power-frequency Puncture Voltage | | 120 | 120 | 140 | 140 | 140 |
| 重量(kg) Net Weight(approx.) | | 13.1 | 14.25 | 21.1 | 29.5 | 29.5 |

www.suz-insulators.com

交流防污型 (钟罩型) AC Anti-Pollution Type (Under Rib)

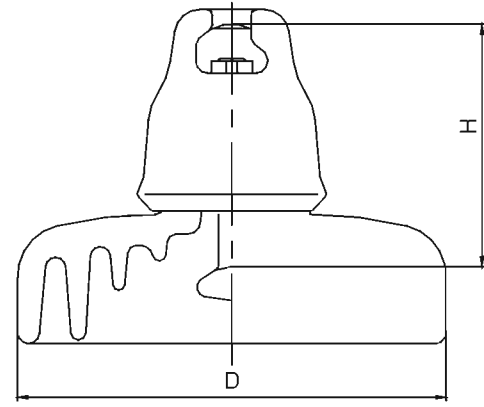
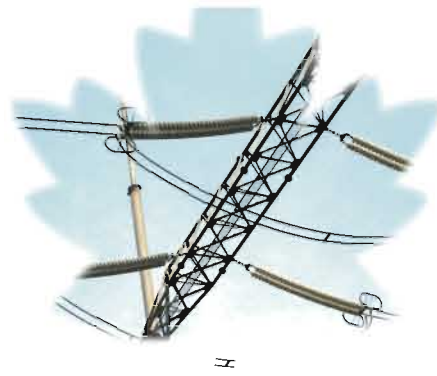


图1 (Fig. 1)

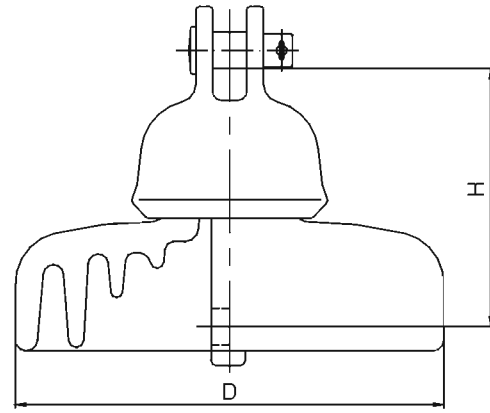
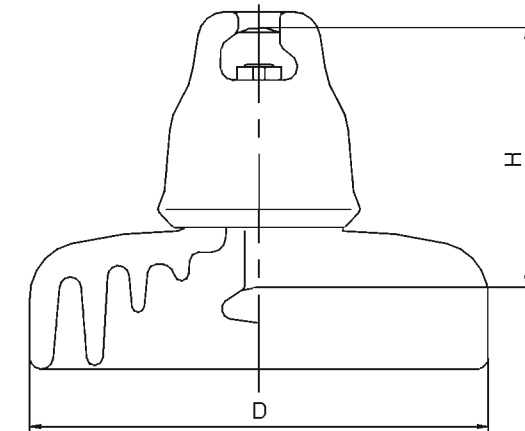
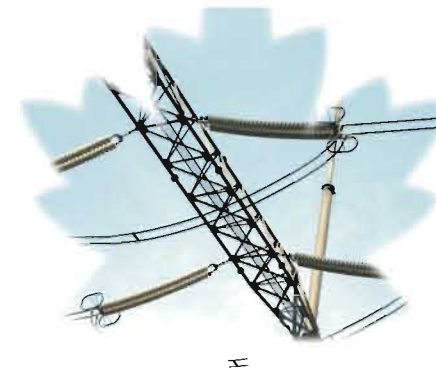


图2 (Fig. 2)

| IEC Designation | U70BLP | U70CP | U80BLP | U100BLP | U120BP | |
|---|------------------------|------------|------------|-------------|-------------|-----|
| 参考型号 Reference No. | U70BP/146H | U70CP/146H | U80BP/146H | U100BP/146H | U120BP/146H | |
| 产品型号 Type | XHP-70 | XHP-70C | XHP-80 | XHP-100 | XHP-120 | |
| 工厂代号 Cat No. | 24140(R) | 24141 | 24142(R) | 24144(R) | 24146(R) | |
| 额定机电破坏负荷(kN) Rated M&E Failing Load | 70 | 70 | 80 | 100 | 120 | |
| 图号 Fig. No. | 1 | 2 | 1 | 1 | 1 | |
| 公称直径 D(mm) Nominal Diameter | 255 | 255 | 255 | 255 | 255 | |
| 公称结构高度 H(mm) Nominal Unit Spacing | 146 | 146 | 146 | 146 | 146 | |
| 公称爬电距离(mm) Nominal Creepage Distance | 432 | 432 | 432 | 432 | 432 | |
| 连接标记(mm) Ball & Socket Size | 16B(A) | 16C | 16B(A) | 16B(A) | 16B(A) | |
| 锁紧销型式 Locking Device | W(R) | - | W(R) | W(R) | W(R) | |
| 逐个拉伸负荷(kN) Routine Tensile Load | 35 | 35 | 40 | 50 | 60 | |
| 打击破坏负荷(N·cm) Impact Strength | 565 | 565 | 565 | 678 | 678 | |
| 最小闪络电压(kV) Minimum Flashover Voltage | 工频 Power-frequency | 干 Dry | 90 | 90 | 90 | 90 |
| | | 湿 Wet | 50 | 50 | 50 | 50 |
| | 50%雷电 Critical Impulse | 正 Pos. | 125 | 125 | 125 | 125 |
| | | 负 Neg. | 130 | 130 | 130 | 130 |
| 耐受电压(kV) Withstand Voltage | 工频 Power-frequency | 干 Dry | 80 | 80 | 80 | 80 |
| | | 湿 Wet | 45 | 45 | 45 | 45 |
| | 雷电冲击 Critical Impulse | 115 | 115 | 115 | 115 | |
| 工频击穿电压(kV) Power-frequency Puncture Voltage | 120 | 120 | 120 | 120 | 120 | |
| 重量(kg) Net Weight(approx.) | 6.9 | 6.9 | 6.9 | 6.9 | 7.8 | |

交流防污型 (钟罩型) AC Anti-Pollution Type (Under Rib)



| IEC Designation | U160BMP | U210BP | U210BP | U300BP | | |
|---|------------------------|-------------|-------------|-------------|-----|-----|
| 参考型号 Reference No. | U160BP/155H | U210BP/170H | U210BP/170H | U300BP/195H | | |
| 产品型号 Type | XHP-160 | XHP-210 | XHP1-210 | XHP-300 | | |
| 工厂代号 Cat No. | 24156(R) | 24158(A) | 24160(A) | 24088 | | |
| 额定机电破坏负荷(kN) Rated M&E Failing Load | 160 | 210 | 210 | 300 | | |
| 图号 Fig. No. | 1 | 1 | 1 | 1 | | |
| 公称直径 D(mm) Nominal Diameter | 330 | 300 | 330 | 320 | | |
| 公称结构高度 H(mm) Nominal Unit Spacing | 155 | 170 | 170 | 195 | | |
| 公称爬电距离(mm) Nominal Creepage Distance | 550 | 480 | 550 | 505 | | |
| 连接标记(mm) Ball & Socket Size | 20 | 20(24) | 20(24) | 24 | | |
| 锁紧销型式 Locking Device | W(R) | R | R | R | | |
| 逐个拉伸负荷(kN) Routine Tensile Load | 80 | 105 | 105 | 150 | | |
| 打击破坏负荷(N·cm) Impact Strength | 1017 | 1017 | 1017 | 1017 | | |
| 最小闪络电压(kV) Minimum Flashover Voltage | 工频 Power-frequency | 干 Dry | 90 | 90 | 100 | 90 |
| | | 湿 Wet | 55 | 55 | 55 | 55 |
| | 50%雷电 Critical Impulse | 正 Pos. | 140 | 135 | 150 | 135 |
| | | 负 Neg. | 160 | 140 | 160 | 140 |
| 耐受电压(kV) Withstand Voltage | 工频 Power-frequency | 干 Dry | 80 | 80 | 80 | 85 |
| | | 湿 Wet | 50 | 50 | 45 | 50 |
| | 雷电冲击 Critical Impulse | 125 | 120 | 120 | 110 | |
| 工频击穿电压(kV) Power-frequency Puncture Voltage | 130 | 120 | 120 | 120 | | |
| 重量(kg) Net Weight(approx.) | 12.7 | 13.1(13.25) | 13.95(14.1) | 14.75 | | |

www.suz-insulators.com

交流防污型 (双伞型)
AC Anti-Pollution Type (Two Outer Rib)

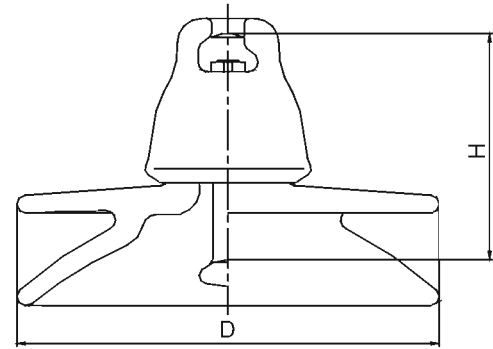
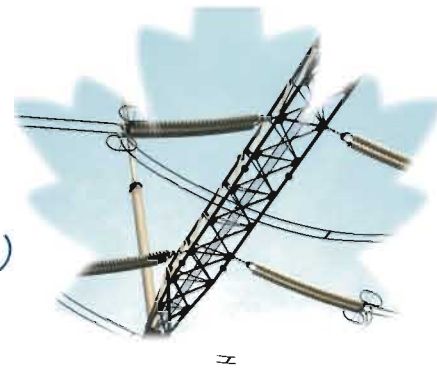


图1 (Fig. 1)

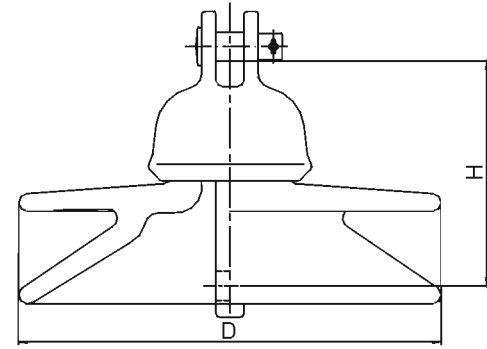
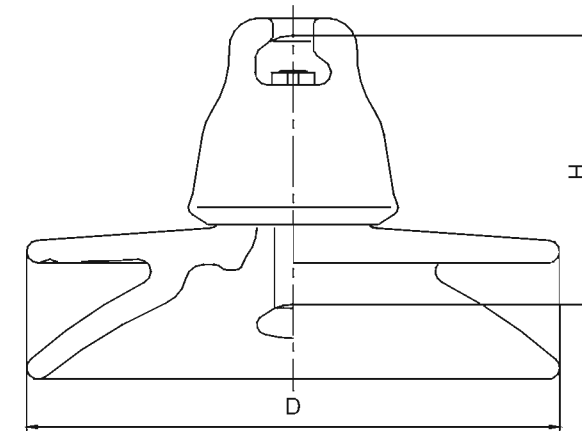
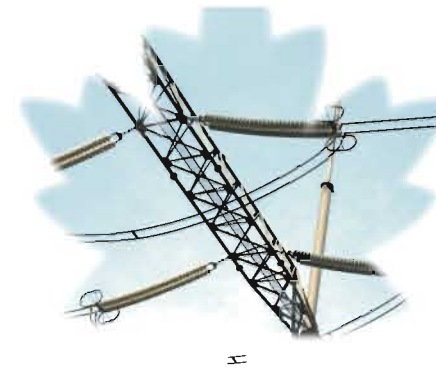


图2 (Fig. 2)

| | | | | | | | |
|---|------------------------|--------|-----------|-----------|-----------|------------|------------|
| IEC Designation | | | U70BEL | U70BL | U70C | U70BLP | U70BELP |
| 参考型号 Reference No. | | | U70B/160D | U70B/146D | U70C/146D | U70BP/146D | U70BP/160D |
| 产品型号 Type | | | XWP1-70 | XWP2-70 | XWP2-70C | XWP3-70 | XWP4-70 |
| 工厂代号 Cat No. | | | 24110(R) | 24106(R) | 24105 | 24130(R) | 24132(R) |
| 额定机电破坏负荷(kN) Rated M&E Failing Load | | | 70 | 70 | 70 | 70 | 70 |
| 图号 Fig. No. | | | 1 | 1 | 2 | 1 | 1 |
| 公称直径 D(mm) Nominal Diameter | | | 255 | 255 | 255 | 280 | 280 |
| 公称结构高度 H(mm) Nominal Unit Spacing | | | 160 | 146 | 146 | 146 | 160 |
| 公称爬电距离(mm) Nominal Creepage Distance | | | 400 | 400 | 400 | 450 | 450 |
| 连接标记(mm) Ball & Socket Size | | | 16B(A) | 16B(A) | 16C | 16B(A) | 16B(A) |
| 锁紧销型式 Locking Device | | | W(R) | W(R) | -- | W(R) | W(R) |
| 逐个拉伸负荷(kN) Routine Tensile Load | | | 35 | 35 | 35 | 35 | 35 |
| 最小闪络电压(kV) Minimum Flashover Voltage | 工频 Power-frequency | 干 Dry | 80 | 80 | 80 | 80 | 80 |
| | | 湿 Wet | 45 | 45 | 45 | 48 | 48 |
| | 50%雷电 Critical Impulse | 正 Pos. | 120 | 120 | 120 | 120 | 120 |
| | | 负 Neg. | 120 | 120 | 120 | 120 | 120 |
| 耐受电压(kV) Withstand Voltage | 工频 Power-frequency | 干 Dry | 75 | 75 | 75 | 75 | 75 |
| | | 湿 Wet | 40 | 40 | 40 | 42 | 42 |
| | 雷电冲击 Critical Impulse | 110 | 110 | 110 | 110 | 110 | |
| 工频击穿电压(kV) Power-frequency Puncture Voltage | | | 120 | 120 | 120 | 120 | 120 |
| 重量(kg) Net Weight(approx.) | | | 5.85 | 5.8 | 5.9 | 7.5 | 7.6 |

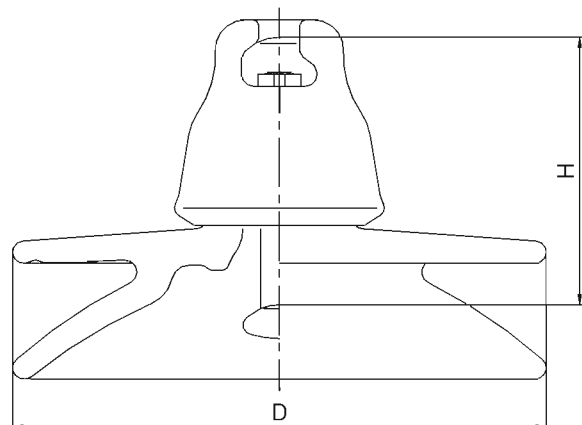
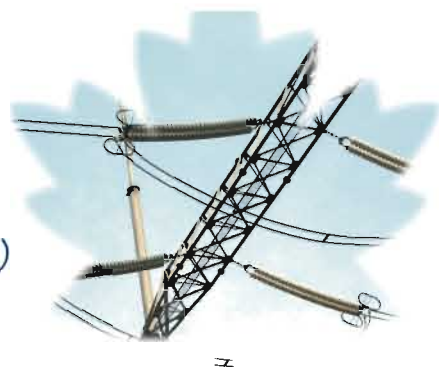
交流防污型 (双伞型)
AC Anti-Pollution Type (Two Outer Rib)



| | | | | | | | |
|---|------------------------|--------|------------|-------------|-------------|------------|-------------|
| IEC Designation | | | U100BEL | U100BELP | U100BLP | U100BL | U100BLP |
| 参考型号 Reference No. | | | U100B/160D | U100BP/160D | U100BP/155D | U100B/146D | U100BP/146D |
| 产品型号 Type | | | XWP1-100 | XWP2-100 | XWP5-100 | XWP3-100 | XWP4-100 |
| 工厂代号 Cat No. | | | 24107A(R) | 24109(R) | 24109D(R) | 24128(R) | 24129(R) |
| 额定机电破坏负荷(kN) Rated M&E Failing Load | | | 100 | 100 | 100 | 100 | 100 |
| 公称直径 D(mm) Nominal Diameter | | | 255 | 280 | 280 | 255 | 280 |
| 公称结构高度 H(mm) Nominal Unit Spacing | | | 160 | 160 | 155 | 146 | 146 |
| 公称爬电距离(mm) Nominal Creepage Distance | | | 400 | 450 | 450 | 400 | 450 |
| 连接标记(mm) Ball & Socket Size | | | 16B(A) | 16B(A) | 16B(A) | 16B(A) | 16B(A) |
| 锁紧销型式 Locking Device | | | W(R) | W(R) | W(R) | W(R) | W(R) |
| 逐个拉伸负荷(kN) Routine Tensile Load | | | 50 | 50 | 50 | 50 | 50 |
| 最小闪络电压(kV) Minimum Flashover Voltage | 工频 Power-frequency | 干 Dry | 80 | 80 | 80 | 80 | 80 |
| | | 湿 Wet | 45 | 48 | 48 | 45 | 48 |
| | 50%雷电 Critical Impulse | 正 Pos. | 120 | 120 | 120 | 120 | 120 |
| | | 负 Neg. | 120 | 120 | 120 | 120 | 120 |
| 耐受电压(kV) Withstand Voltage | 工频 Power-frequency | 干 Dry | 75 | 75 | 75 | 75 | 75 |
| | | 湿 Wet | 40 | 42 | 42 | 40 | 42 |
| | 雷电冲击 Critical Impulse | 110 | 110 | 110 | 110 | 110 | |
| 工频击穿电压(kV) Power-frequency Puncture Voltage | | | 120 | 120 | 120 | 120 | 120 |
| 重量(kg) Net Weight(approx.) | | | 5.9 | 7.6 | 7.6 | 5.8 | 7.5 |

www.suz-insulators.com

交流防污型 (双伞型)
AC Anti-Pollution Type (Two Outer Rib)



交流防污型 (双伞型)
AC Anti-Pollution Type (Two Outer Rib)

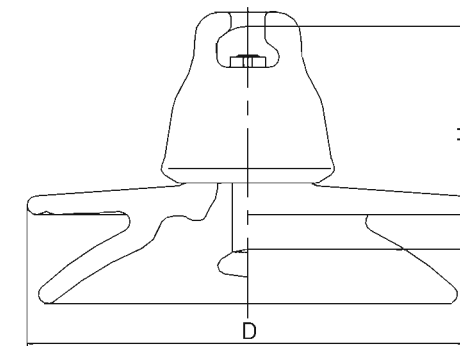
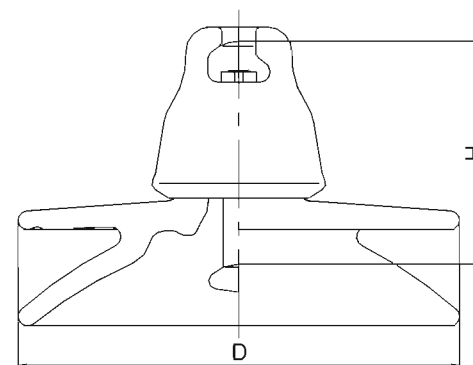
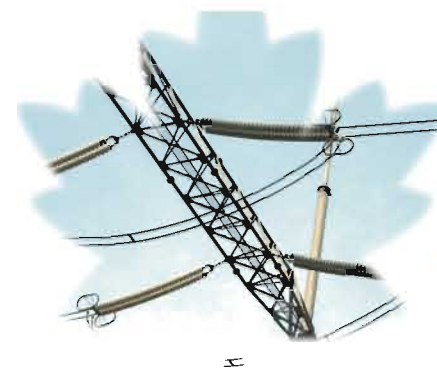


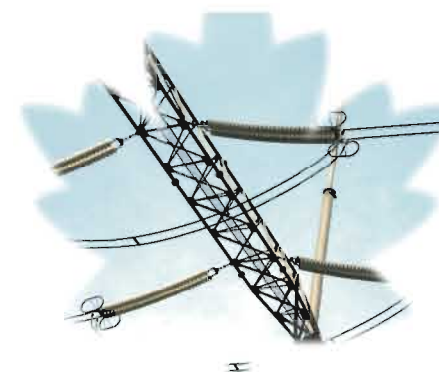
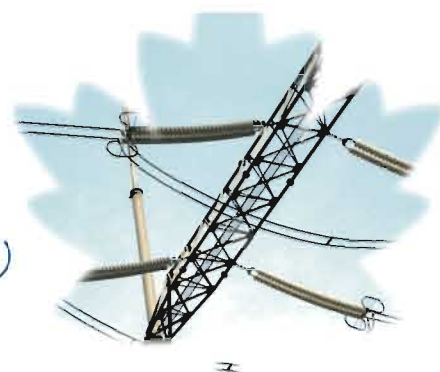
图1 (Fig. 1)

图2 (Fig. 2)

| IEC Designation | | U120B | U120BM/LP | | U120BP |
|---|------------------------|------------|-----------------------------|-----------------------------|-------------|
| 参考型号 Reference No. | | U120B/146D | U120BP/155 D U120BP/160D | U120BP/155 D U120BP/160D | U120BP/146D |
| 产品型号 Type | | XWP5-120 | XWP1-120 | XWP4(2)-120 | XWP3-120 |
| 工厂代号 Cat No. | | 24101(R) | 24119(R) 24119A(R) | 24103B(R) 24103(R) | 24103A(R) |
| 额定机电破坏负荷(kN) Rated M&E Failing Load | | 120 | 120 | 120 | 120 |
| 公称直径 D(mm) Nominal Diameter | | 280 | 300 | 280 | 280 |
| 公称结构高度 H(mm) Nominal Unit Spacing | | 146 | 155/160 | 155/160 | 146 |
| 公称爬电距离(mm) Nominal Creepage Distance | | 400 | 450 | 450 | 450 |
| 连接标记(mm) Ball & Socket Size | | 16B(A) | 16B(A) | 16B(A) | 16B(A) |
| 锁紧销型式 Locking Device | | W(R) | W(R) | W(R) | W(R) |
| 逐个拉伸负荷(kN) Routine Tensile Load | | 60 | 60 | 60 | 60 |
| 最小闪络电压(kV) Minimum Flashover Voltage | 工频 Power-frequency | 干 Dry | 90 | 90 | 90 |
| | | 湿 Wet | 50 | 50 | 50 |
| | 50%雷电 Critical Impulse | 正 Pos. | 130 | 130 | 130 |
| | | 负 Neg. | 130 | 130 | 130 |
| 耐受电压(kV) Withstand Voltage | 工频 Power-frequency | 干 Dry | 85 | 85 | 85 |
| | | 湿 Wet | 45 | 45 | 45 |
| | 雷电冲击 Critical Impulse | | 120 | 120 | 120 |
| 工频击穿电压(kV) Power-frequency Puncture Voltage | | 120 | 120 | 120 | 120 |
| 重量(kg) Net Weight(approx.) | | 7.3 | 8.8 | 8.7 | 8.7 |

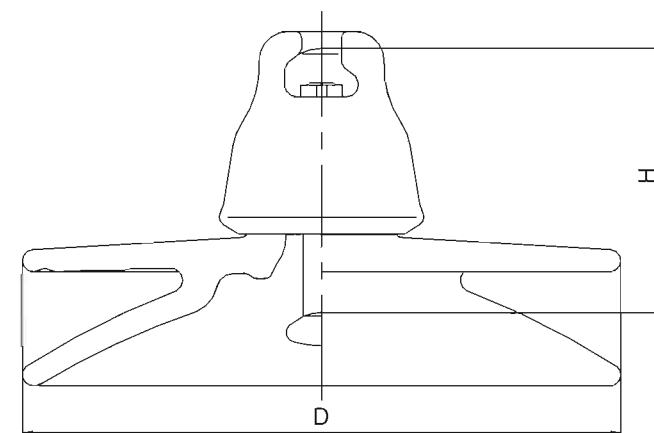
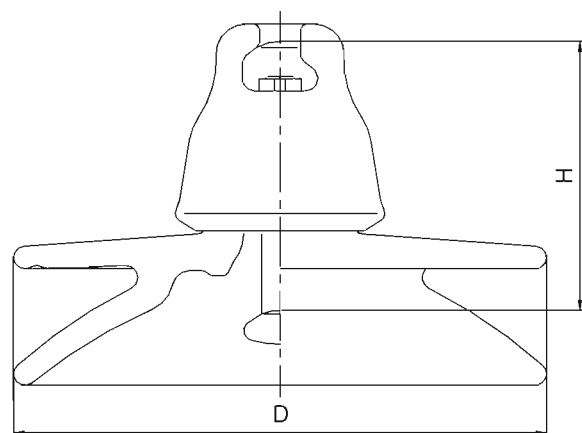
www.suz-insulators.com

| IEC Designation | | U160BM | | U160BMP | U160BLP |
|---|------------------------|------------|------------|----------------------------|------------|
| 参考型号 Reference No. | | U160B/155D | U160B/155D | U160BP/155D U160BP/160D | U160B/170D |
| 产品型号 Type | | XWP-160 | XWP1-160 | XWP2-160 | XWP6-160 |
| 工厂代号 Cat No. | | 24108(R) | 24117(R) | 24116(R) 24116A(R) | 24116B(R) |
| 额定机电破坏负荷(kN) Rated M&E Failing Load | | 160 | 160 | 160 | 160 |
| 图号 Fig. No. | | 1 | 2 | 1 | 1 |
| 公称直径 D(mm) Nominal Diameter | | 280 | 300 | 300 | 300 |
| 公称结构高度 H(mm) Nominal Unit Spacing | | 155 | 155 | 155/160 | 170 |
| 公称爬电距离(mm) Nominal Creepage Distance | | 400 | 400 | 450 | 450 |
| 连接标记(mm) Ball & Socket Size | | 20 | 20 | 20 | 20 |
| 锁紧销型式 Locking Device | | W(R) | W(R) | W(R) | W(R) |
| 逐个拉伸负荷(kN) Routine Tensile Load | | 80 | 80 | 80 | 80 |
| 最小闪络电压(kV) Minimum Flashover Voltage | 工频 Power-frequency | 干 Dry | 80 | 90 | 90 |
| | | 湿 Wet | 45 | 50 | 50 |
| | 50%雷电 Critical Impulse | 正 Pos. | 120 | 130 | 130 |
| | | 负 Neg. | 120 | 130 | 130 |
| 耐受电压(kV) Withstand Voltage | 工频 Power-frequency | 干 Dry | 75 | 85 | 85 |
| | | 湿 Wet | 40 | 45 | 45 |
| | 雷电冲击 Critical Impulse | | 120 | 120 | 120 |
| 工频击穿电压(kV) Power-frequency Puncture Voltage | | 120 | 120 | 120 | 120 |
| 重量(kg) Net Weight(approx.) | | 8.95 | 8.6 | 9.8 | 9.9 |



交流防污型 (双伞型)
AC Anti-Pollution Type (Two Outer Rib)

交流防污型 (大爬距双伞型)
AC Anti-Pollution Type (Two Outer Rib)

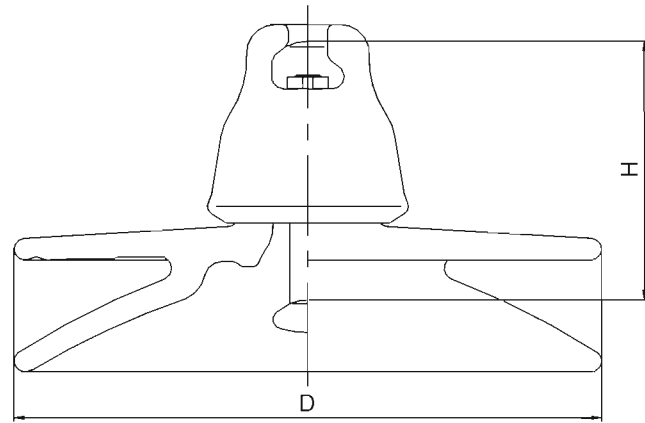
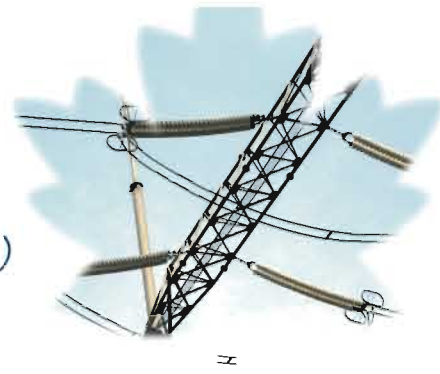


| IEC Designation | | U210BP | | U240BP | U300BP |
|---|------------------------|-------------|----------|-------------|-------------|
| 参考型号 Reference No. | | U210BP/170D | | U240BP/170D | U300BP/195D |
| 产品型号 Type | | XWP-210 | XWP1-210 | XWP1-240 | XWP2-300 |
| 工厂代号 Cat No. | | 24121 | 24121A | 24165 | 24163 |
| 额定机电破坏负荷(kN) Rated M&E Failing Load | | 210 | 210 | 240 | 300 |
| 公称直径 D(mm) Nominal Diameter | | 300 | 300 | 300 | 330 |
| 公称结构高度 H(mm) Nominal Unit Spacing | | 170 | 170 | 170 | 195 |
| 公称爬电距离(mm) Nominal Creepage Distance | | 450 | 450 | 450 | 480 |
| 连接标记(mm) Ball & Socket Size | | 20 | 24 | 24 | 24 |
| 锁紧销型式 Locking Device | | R | R | R | R |
| 逐个拉伸负荷(kN) Routine Tensile Load | | 105 | 105 | 120 | 150 |
| 最小闪络电压(kV) Minimum Flashover Voltage | 工频 Power-frequency | 干 Dry | 90 | 90 | 90 |
| | | 湿 Wet | 50 | 50 | 50 |
| | 50%雷电 Critical Impulse | 正 Pos. | 130 | 130 | 130 |
| 耐受电压(kV) Withstand Voltage | 工频 Power-frequency | 干 Dry | 85 | 85 | 85 |
| | | 湿 Wet | 45 | 45 | 45 |
| | 雷电冲击 Critical Impulse | | 120 | 120 | 120 |
| 工频击穿电压(kV) Power-frequency Puncture Voltage | | | 120 | 120 | 130 |
| 重量(kg) Net Weight(approx.) | | 10.9 | 11.1 | 11.6 | 14.8 |

| IEC Designation | | U70BL/ELP | U100BL/ELP | U160BLP | U160BM/LP |
|---|------------------------|---------------------------|-----------------------------|--------------|-----------------------------|
| 参考型号 Reference No. | | U70BP /146D U70BP/160D | U100BP /146D U100BP/160D | U160BP /170D | U160BP /155D U160BP/170D |
| 产品型号 Type | | XWP8-70 XWP9-70 | XWP8-100 XWP9-100 | XWP7-160 | XWP9-160 XWP10-160 |
| 工厂代号 Cat No. | | 24126(R) 24126A(R) | 24127(R) 24127A(R) | 24161(R) | 24148(R) 24148A(R) |
| 额定机电破坏负荷(kN) Rated M&E Failing Load | | 70 | 100 | 160 | 160 |
| 公称直径 D(mm) Nominal Diameter | | 330 | 330 | 340 | 330 |
| 公称结构高度 H(mm) Nominal Unit Spacing | | 146/160 | 146/160 | 170 | 155/170 |
| 公称爬电距离(mm) Nominal Creepage Distance | | 525 | 525 | 525 | 500 |
| 连接标记(mm) Ball & Socket Size | | 16 | 16 | 20 | 20 |
| 锁紧销型式 Locking Device | | W(R) | W(R) | W(R) | W(R) |
| 逐个拉伸负荷(kN) Routine Tensile Load | | 35 | 50 | 80 | 80 |
| 最小闪络电压(kV) Minimum Flashover Voltage | 工频 Power-frequency | 干 Dry | 90 | 90 | 90 |
| | | 湿 Wet | 50 | 50 | 50 |
| | 50%雷电 Critical Impulse | 正 Pos. | 130 | 130 | 130 |
| 耐受电压(kV) Withstand Voltage | 工频 Power-frequency | 干 Dry | 85 | 85 | 85 |
| | | 湿 Wet | 45 | 45 | 45 |
| | 雷电冲击 Critical Impulse | | 120 | 120 | 120 |
| 工频击穿电压(kV) Power-frequency Puncture Voltage | | | 120 | 120 | 120 |
| 重量(kg) Net Weight(approx.) | | 9.8 | 9.9 | 11.3 | 10.9 |

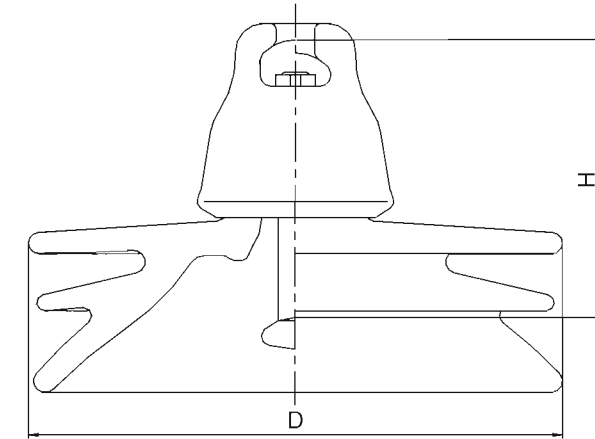
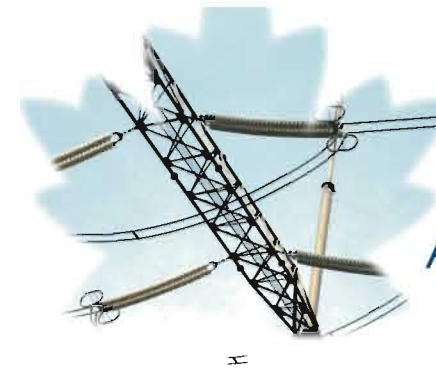
www.suz-insulators.com

交流防污型 (大爬距双伞型) AC Anti-Pollution Type (Two Outer Rib)



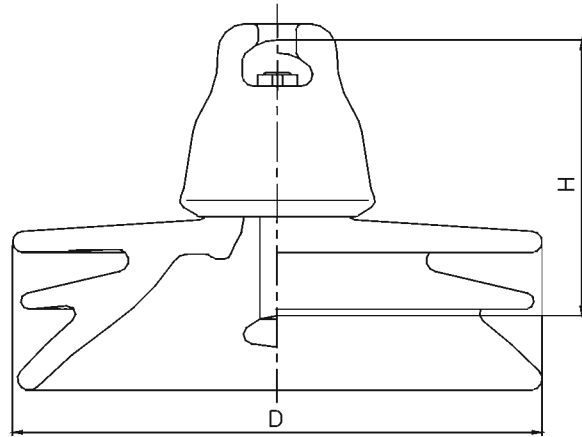
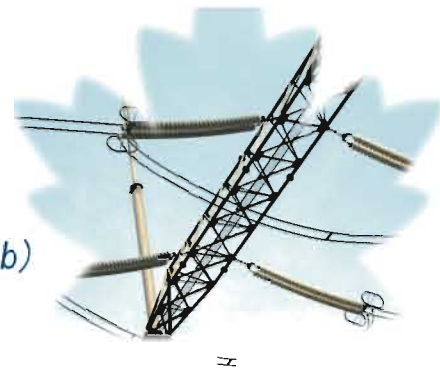
| IEC Designation | U210BP | U240BP | U300BP | U420B | | |
|---|------------------------|-------------|-------------|------------|-----|-----|
| 参考型号 Reference No. | U210BP/170D | U240BP/170D | U300BP/195D | U420B/205D | | |
| 产品型号 Type | XWP3-210 | XWP-240 | XWP1-300 | XWP-420 | | |
| 工厂代号 Cat No. | 24135(A) | 24138 | 24162 | 24173 | | |
| 额定机电破坏负荷(kN) Rated M&E Failing Load | 210 | 240 | 300 | 420 | | |
| 公称直径 D(mm) Nominal Diameter | 340 | 340 | 360 | 370 | | |
| 公称结构高度 H(mm) Nominal Unit Spacing | 170 | 170 | 195 | 205 | | |
| 公称爬电距离(mm) Nominal Creepage Distance | 525 | 525 | 525 | 550 | | |
| 连接标记(mm) Ball & Socket Size | 20(24) | 24 | 24 | 28 | | |
| 锁紧销型式 Locking Device | R | R | R | R | | |
| 逐个拉伸负荷(kN) Routine Tensile Load | 105 | 105 | 150 | 210 | | |
| 最小闪络电压(kV) Minimum Flashover Voltage | 工频 Power-frequency | 干 Dry | 90 | 90 | 90 | 90 |
| | | 湿 Wet | 50 | 50 | 50 | 50 |
| | 50%雷电 Critical Impulse | 正 Pos. | 130 | 130 | 130 | 130 |
| 耐受电压(kV) Withstand Voltage | 工频 Power-frequency | 干 Dry | 85 | 85 | 85 | 85 |
| | | 湿 Wet | 45 | 45 | 45 | 45 |
| | 雷电冲击 Critical Impulse | | 120 | 120 | 120 | 130 |
| 工频击穿电压(kV) Power-frequency Puncture Voltage | | 120 | 120 | 130 | 140 | |
| 重量(kg) Net Weight(approx.) | 12.6 | 13.2 | 14.9 | 20.5 | | |

交流防污型 (三伞型) AC Anti-Pollution Type (Three Outer Rib)



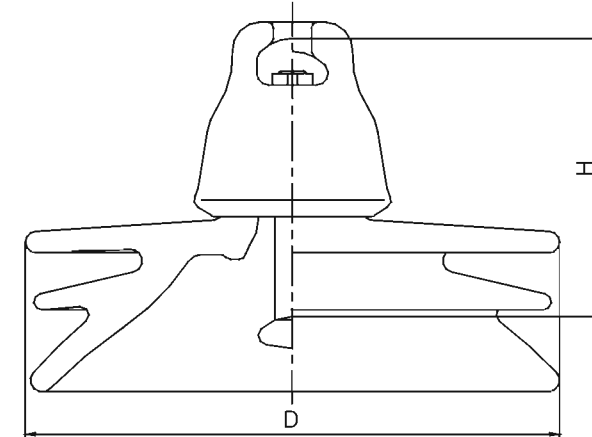
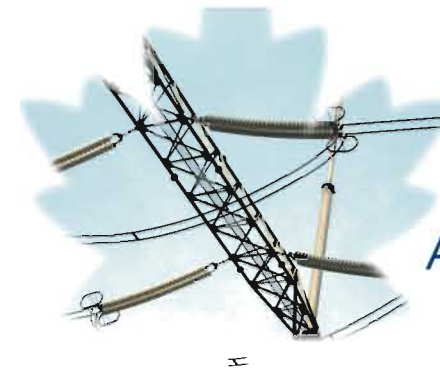
| IEC Designation | U70BL/ELP | U70BLP | U70ELP | U100BL/ELP | U100BLP | U100ELP |
|---|--------------------------|------------|--------------------------|----------------------------|-------------|----------------------------|
| 参考型号 Reference No. | U70BP/146T U70BP/160T | U70BP/146T | U70BP/155T U70BP/160T | U100BP/146T U100BP/160T | U100BP/146T | U100BP/155T U100BP/160T |
| 产品型号 Type | XWP7-70 XWP6-70 | XWP11-70 | XWP12-70 XWP10-70 | XWP7-100 XWP6-100 | XWP11-100 | XWP12-100 XWP10-100 |
| 工厂代号 Cat No. | 24153(R) 24153A(R) | 24170(R) | 24170D(R) 24170A(R) | 24154(R) 24154A(R) | 24171(R) | 24171D(R) 24171A(R) |
| 额定机电破坏负荷(kN) Rated M&E Failing Load | 70 | 70 | 70 | 100 | 100 | 100 |
| 公称直径 D(mm) Nominal Diameter | 280 | 310 | 310 | 280 | 310 | 310 |
| 公称结构高度 H(mm) Nominal Unit Spacing | 146/160 | 146 | 155/160 | 146/160 | 146 | 155/160 |
| 公称爬电距离(mm) Nominal Creepage Distance | 500 | 545 | 545 | 500 | 545 | 545 |
| 连接标记(mm) Ball & Socket Size | 16B(A) | 16B(A) | 16B(A) | 16B(A) | 16B(A) | 16B(A) |
| 锁紧销型式 Locking Device | W(R) | W(R) | W(R) | W(R) | W(R) | W(R) |
| 逐个拉伸负荷(kN) Routine Tensile Load | 35 | 35 | 35 | 50 | 50 | 50 |
| 最小闪络电压(kV) Minimum Flashover Voltage | 工频 Power-frequency | 干 Dry | 90 | 90 | 90 | 90 |
| | | 湿 Wet | 50 | 50 | 50 | 50 |
| | 50%雷电 Critical Impulse | 正 Pos. | 130 | 130 | 130 | 130 |
| 耐受电压(kV) Withstand Voltage | 工频 Power-frequency | 干 Dry | 85 | 85 | 85 | 85 |
| | | 湿 Wet | 45 | 45 | 45 | 45 |
| | 雷电冲击 Critical Impulse | | 120 | 120 | 120 | 120 |
| 工频击穿电压(kV) Power-frequency Puncture Voltage | | 130 | 130 | 130 | 130 | 130 |
| 重量(kg) Net Weight(approx.) | 8.7 | 10.7 | 10.8 | 8.8 | 10.8 | 10.9 |

交流防污型 (三伞型)
AC Anti-Pollution Type (Three Outer Rib)



| IEC Designation | | U160BMP | U160BLP | | U210BP | |
|---|------------------------|-------------|-------------|-------------|-------------|-----|
| 参考型号 Reference No. | | U160BP/155T | U160BP/160T | U160BP/170T | U210BP/170T | |
| 产品型号 Type | | XWP4-160 | XWP5-160 | XWP3-160 | XWP4-210 | |
| 工厂代号 Cat No. | | 24150A(R) | 24150B(R) | 24150(R) | 24151(A) | |
| 额定机电破坏负荷(kN) Rated M&E Failing Load | | 160 | 160 | 160 | 210 | |
| 公称直径 D(mm) Nominal Diameter | | 330 | 330 | 330 | 330 | |
| 公称结构高度 H(mm) Nominal Unit Spacing | | 155 | 160 | 170 | 170 | |
| 公称爬电距离(mm) Nominal Creepage Distance | | 545 | 545 | 545 | 545 | |
| 连接标记(mm) Ball & Socket Size | | 20 | 20 | 20 | 20(24) | |
| 锁紧销型式 Locking Device | | W(R) | W(R) | W(R) | R | |
| 逐个拉伸负荷(kN) Routine Tensile Load | | 80 | 80 | 80 | 105 | |
| 最小闪络电压(kV) Minimum Flashover Voltage | 工频 Power-frequency | 干 Dry | 90 | 90 | 90 | 90 |
| | | 湿 Wet | 50 | 50 | 50 | 50 |
| | 50%雷电 Critical Impulse | 正 Pos. | 130 | 130 | 130 | 130 |
| | | 负 Neg. | 130 | 130 | 130 | 130 |
| 耐受电压(kV) Withstand Voltage | 工频 Power-frequency | 干 Dry | 85 | 85 | 85 | 85 |
| | | 湿 Wet | 45 | 45 | 45 | 45 |
| | 雷电冲击 Critical Impulse | 120 | 120 | 120 | 120 | |
| 工频击穿电压(kV) Power-frequency Puncture Voltage | | 130 | 130 | 130 | 130 | |
| 重量(kg) Net Weight(approx.) | | 13.3 | 13.3 | 13.4 | 14.8(15.0) | |

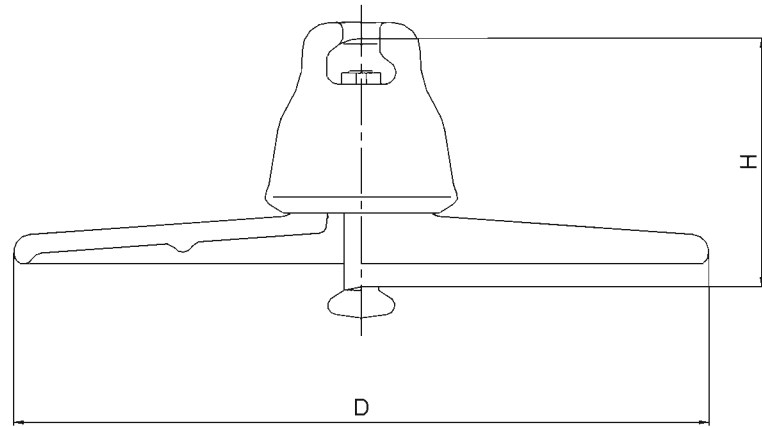
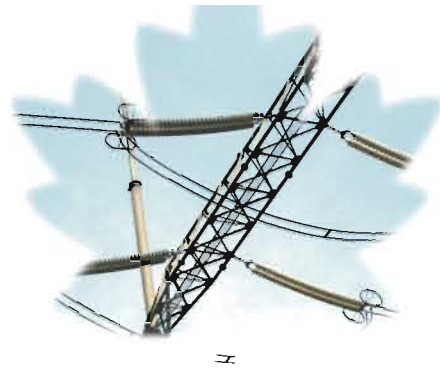
交流防污型 (三伞型)
AC Anti-Pollution Type (Three Outer Rib)



| IEC Designation | | U240BP | U300BP | | U420B | |
|---|------------------------|-------------|-------------|----------|-------------|-----|
| 参考型号 Reference No. | | U240BP/170T | U300BP/195T | | U420BP/205T | |
| 产品型号 Type | | XWP4-240 | XWP-300 | XWP3-300 | XWP4-420 | |
| 工厂代号 Cat No. | | 24152 | 24133 | 24167 | 24174 | |
| 额定机电破坏负荷(kN) Rated M&E Failing Load | | 240 | 300 | 300 | 420 | |
| 公称直径 D(mm) Nominal Diameter | | 330 | 340 | 380 | 345 | |
| 公称结构高度 H(mm) Nominal Unit Spacing | | 170 | 195 | 195 | 205 | |
| 公称爬电距离(mm) Nominal Creepage Distance | | 545 | 545 | 635 | 550 | |
| 连接标记(mm) Ball & Socket Size | | 24 | 24 | 24 | 28 | |
| 锁紧销型式 Locking Device | | R | R | R | R | |
| 逐个拉伸负荷(kN) Routine Tensile Load | | 120 | 150 | 150 | 210 | |
| 最小闪络电压(kV) Minimum Flashover Voltage | 工频 Power-frequency | 干 Dry | 90 | 90 | 110 | 90 |
| | | 湿 Wet | 50 | 50 | 65 | 50 |
| | 50%雷电 Critical Impulse | 正 Pos. | 130 | 130 | 130 | 130 |
| | | 负 Neg. | 130 | 130 | 130 | 130 |
| 耐受电压(kV) Withstand Voltage | 工频 Power-frequency | 干 Dry | 85 | 85 | 100 | 85 |
| | | 湿 Wet | 45 | 45 | 60 | 45 |
| | 雷电冲击 Critical Impulse | 120 | 120 | 130 | 130 | |
| 工频击穿电压(kV) Power-frequency Puncture Voltage | | 130 | 130 | 140 | 140 | |
| 重量(kg) Net Weight(approx.) | | 15.4 | 16.3 | 20.5 | 20.9 | |

www.suz-insulators.com

交流防污型 (草帽型) Aerodynamic Suspension Porcelain Insulator



| IEC Designation | | | U70BL | U80BS | U100BL | U120BL | U160BM | U160BS |
|--|------------------------|--------|-----------|-----------|------------|------------|------------|------------|
| 参考型号 Reference No. | | | U70B/146M | U80B/140M | U100B/146M | U120B/160M | U160B/155M | U160B/146M |
| 产品型号 Type | | | XMP-70 | XMP-80 | XMP-100 | XMP-120 | XMP-160 | XMP2-160 |
| 工厂代号 Cat No. | | | 24062(R) | 24064(R) | 24063(R) | 24061(R) | 24066(R) | 24069(R) |
| 额定机电破坏负荷(kN) Rated M&E Failing Load | | | 70 | 80 | 100 | 120 | 160 | 160 |
| 公称直径 D(mm) Nominal Diameter | | | 350 | 360 | 360 | 360 | 360 | 425 |
| 公称结构高度 H(mm) Nominal Unit Spacing | | | 146 | 140 | 146 | 160 | 155 | 146 |
| 公称爬电距离(mm) Nominal Creepage Distance | | | 330 | 330 | 330 | 330 | 300 | 385 |
| 连接标记(mm) Ball & Socket Size | | | 16B(A) | 16B(A) | 16B(A) | 16B(A) | 20 | 20 |
| 锁紧销型式 Locking Device | | | W(R) | W(R) | W(R) | W(R) | W/R | W/R |
| 逐个拉伸负荷(kN) Routine Tensile Load | | | 35 | 40 | 50 | 60 | 80 | 80 |
| 最小闪络电压(kV) Minimum Flashover Voltage | 工频 Power-frequency | 干 Dry | 80 | 80 | 80 | 80 | 80 | 80 |
| | | 湿 Wet | 45 | 45 | 45 | 45 | 45 | 45 |
| | 50%雷电 Critical Impulse | 正 Pos. | 120 | 120 | 120 | 120 | 120 | 120 |
| | | 负 Neg. | 120 | 120 | 120 | 120 | 120 | 120 |
| 耐受电压(kV) Withstand Voltage | 工频 Power-frequency | 干 Dry | 75 | 75 | 75 | 75 | 75 | 75 |
| | | 湿 Wet | 40 | 40 | 40 | 40 | 40 | 40 |
| | 雷电冲击 Critical Impulse | | 110 | 110 | 110 | 110 | 110 | 110 |
| 工频击穿电压(kV) Power-frequency Puncture Voltage | | | 120 | 120 | 120 | 120 | 120 | 120 |
| 重量(kg) Net Weight(approx.) | | | 7.8 | 7.9 | 7.9 | 8.5 | 9.9 | 10.5 |

交流普通型 (槽型) AC Normal Type (Clevis)

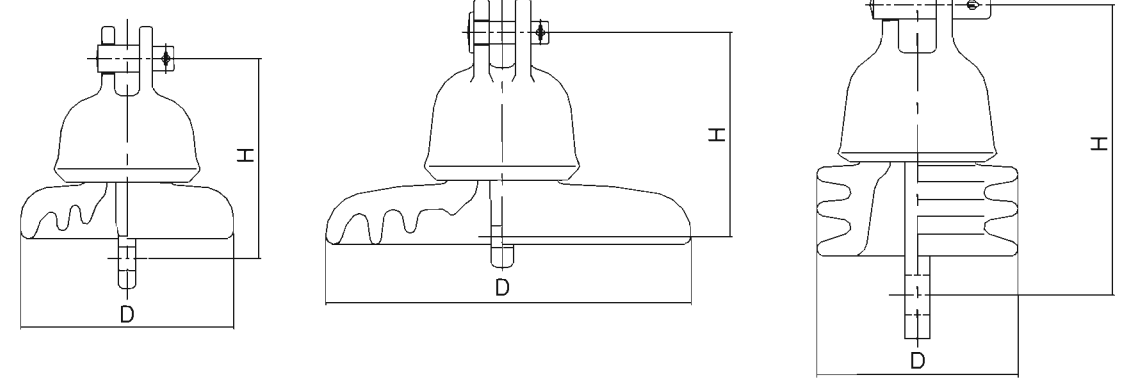
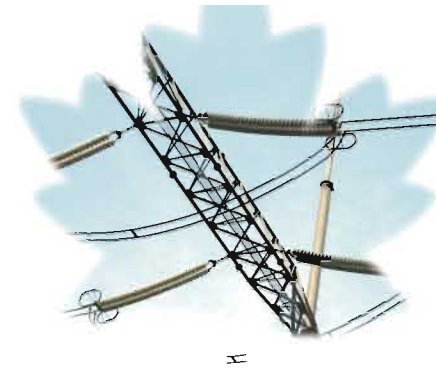


图 1 (Fig. 1)

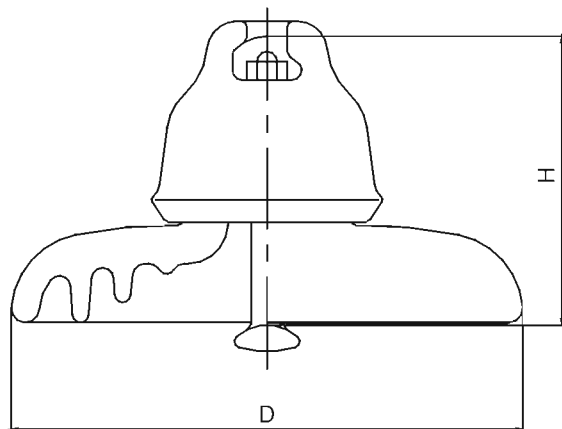
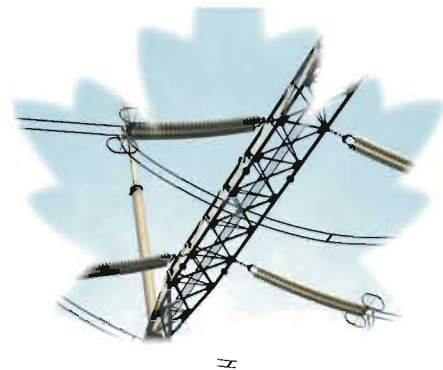
图 2 (Fig. 2)

图 3 (Fig. 3)

| ANSI Designation | | 52-1 | 52-2 | 52-4 | 52-6 | 52-9 |
|--|--|-----------|-----------|-----------|-------------|-----------|
| 工厂代号 Cat No. | | 24201A | 24202A | 24204A | 24206A | 24209 |
| 额定机电破坏负荷, lb(kN) Rated M&E Failing Load | | 10000(44) | 15000(70) | 15000(70) | 25000(111) | 10000(44) |
| 图号 (Fig. No.) | | 1 | 1 | 2 | 2 | 3 |
| 尺寸 Dimensions | 公称直径 D(mm) Nominal Diameter | 160 | 190 | 254 | 254 | 110 |
| | 公称结构高度 H(mm) Nominal Unit Spacing | 140 | 146 | 146 | 146 | 160 |
| | 公称爬电距离(mm) Nominal Creepage Distance | 178 | 210 | 292 | 292 | 171 |
| 逐个拉伸负荷, lb (kN) Routine Tensile Load | | 5000(22) | 7500(35) | 7500(35) | 12500(55.5) | 5000(22) |
| 雷电冲击闪络电压(kV) Critical-impulse Flashover Voltage | 正极性 Positive | 100 | 115 | 125 | 125 | 100 |
| | 负极性 Negative | 100 | 115 | 130 | 130 | 90 |
| 工频闪络电压(kV) Low-frequency Flashover Voltage | 干 Dry | 60 | 65 | 80 | 80 | 60 |
| | 湿 Wet | 30 | 35 | 50 | 50 | 30 |
| 无线电干扰数据 Radio-influence Voltage Data | 对地试验电压 kV Test Voltage to Ground | 7.5 | 7.5 | 10 | 10 | 7.5 |
| | 1MHz 下最大无线电干扰电压 μ V Max.RIV at 1MHz | 50 | 50 | 50 | 50 | 50 |
| 工频击穿电压(kV) Power-frequency Puncture Voltage | | 80 | 90 | 110 | 110 | 80 |
| 重量(kg) Net Weight(approx.) | | 2.9 | 3.8 | 5.7 | 5.9 | 2.7 |

www.suz-insulators.com

交流普通型 AC Normal Type



| ANSI Designation | | 52-3 | | 52-5 | | 52-8 | |
|--|---------------------------------------|---------------|-----------------|-----------------|------------------|----------------|----------------|
| 工厂代号 | Cat No. | 24203A | 24303A | 24205A | 24305A | 24208A | 24039 |
| 额定机电破坏负荷, lb(kN) Rated M&E Failing Load | | 15000 (70) | 20000 (89) | 25000 (111) | 30000 (134) | 36000 (160) | 40000 (178) |
| 尺寸 寸 | 公称直径 D(mm) Nominal Diameter | 254 | 254 | 254 | 254 | 280 | 255 |
| | 公称结构高度 H(mm) Nominal Unit Spacing | 146 | 146 | 146 | 146 | 146 | 146 |
| | 公称爬电距离(mm) Nominal Creepage Distance | 292 | 292 | 292 | 292 | 305 | 279 |
| 逐个拉伸负荷(kN) Routine Tensile Load | | 7500 (35) | 10000 (44.5) | 12500 (55.6) | 15000 (66.75) | 18000 (80) | 20000 (89) |
| 雷电冲击闪络电压(kV) Critical-impulse Flashover Voltage | 正极性 Positive | 125 | 125 | 125 | 125 | 125 | 125 |
| | 负极性 Negative | 130 | 130 | 130 | 130 | 130 | 130 |
| 工频闪络电压(kV) Low-frequency Flashover Voltage | 干 Dry | 80 | 80 | 80 | 80 | 80 | 80 |
| | 湿 Wet | 50 | 50 | 50 | 50 | 50 | 50 |
| 无线电干扰数据 Radio-influence Voltage Data | 对地试验电压 kV Test Voltage to Ground | 10 | 10 | 10 | 10 | 10 | 10 |
| | 1MHz 下最大无线电干扰电压 μV Max.RIV at 1MHz | 50 | 50 | 50 | 50 | 50 | 50 |
| 工频击穿电压(kV) Power-frequency Puncture Voltage | | 110 | 110 | 110 | 110 | 110 | 110 |
| 重量(kg) Net Weight(approx.) | | 5.6 | 5.7 | 5.8 | 6.3 | 8.0 | 8.0 |

交流普通型 AC Normal Type

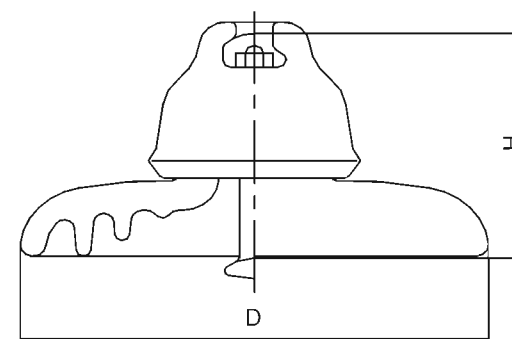
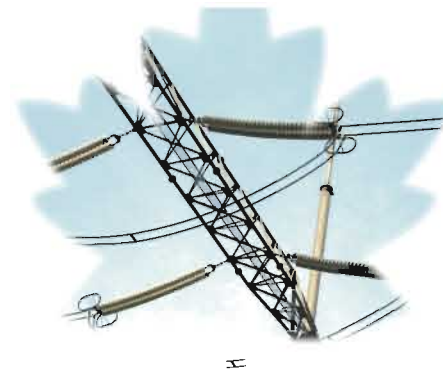


图1 (Fig. 1)

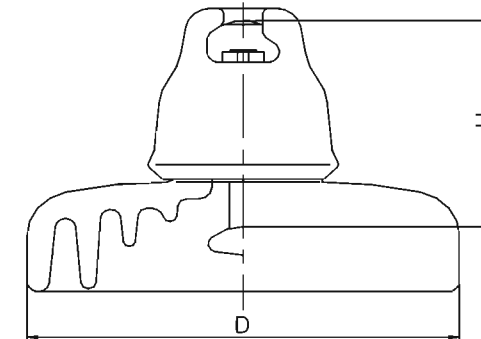


图2 (Fig. 2)

| 额定机电破坏负荷 (kN) Rated M&E Failing Load | | 70 | 80 | 80 | 125 | 190 | 300 |
|--|--------------------------------------|-------|-------|--------|--------|-------|-------|
| 工厂代号 | Cat No. | 24047 | 24038 | 24139 | 24053 | 24057 | 24085 |
| 图号 | (Fig. No.) | 1 | 1 | 2 | 1 | 1 | 1 |
| 尺寸 寸 | 公称直径 D(mm) Nominal Diameter | 254 | 254 | 254 | 280 | 320 | 320 |
| | 公称结构高度 H(mm) Nominal Unit Spacing | 140 | 140 | 140 | 178 | 176 | 195 |
| | 公称爬电距离(mm) Nominal Creepage Distance | 298 | 300 | 432 | 305 | 380 | 450 |
| 逐个拉伸负荷(kN) Routine Tensile Load | | 28 | 32 | 32 | 50 | 76 | 120 |
| 雷电冲击闪络电压(kV) Critical-impulse Flashover Voltage | 正极性 Positive | 110 | 110 | 125 | 125 | 135 | 140 |
| | 负极性 Negative | 113 | 113 | 130 | 130 | 140 | 145 |
| 工频闪络电压(kV) Low-frequency Flashover Voltage | 干 Dry | 82 | 82 | 90 | 90 | 82 | 90 |
| | 湿 Wet | 48 | 48 | 50 | 50 | 48 | 55 |
| 工频击穿电压(kV) Power-frequency Puncture Voltage | | 110 | 110 | 110 | 110 | 120 | 120 |
| 锁紧销型式 Locking Device | | R/W | R/W | R/W | R/W | R | R |
| 连接标记(mm) Ball & Socket Coupling | | 16A/B | 16A/B | 16 A/B | 16 A/B | 20 | 24 |
| 重量(kg) Net Weight(approx.) | | 5.6 | 5.7 | 6.9 | 7.5 | 10.5 | 14.25 |

www.suz-insulators.com

盘形地线瓷绝缘子型 Disc Porcelain Insulator for Ground Overhead

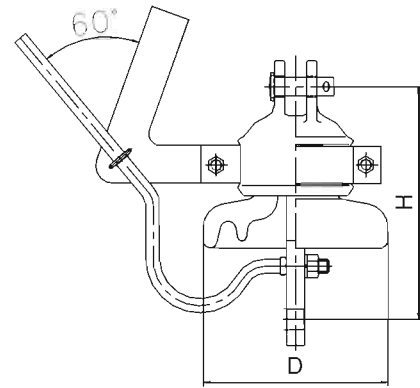


图 1 (Fig. 1)

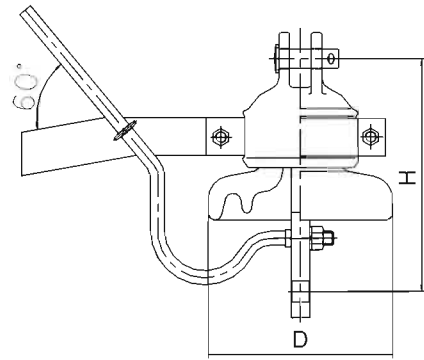
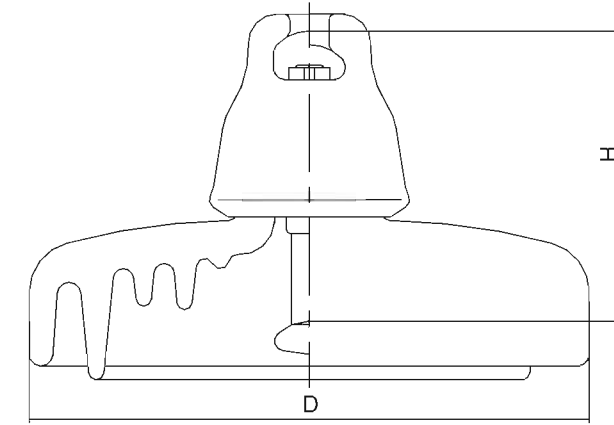
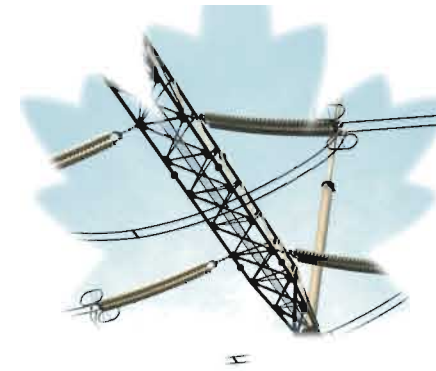


图 2 (Fig. 2)

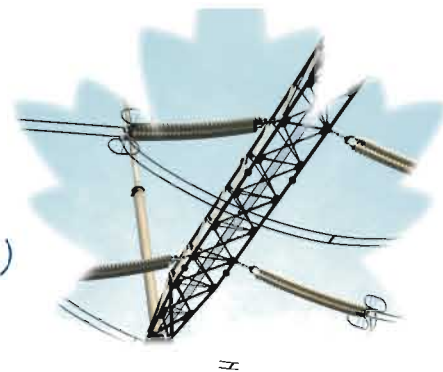
| IEC Designation | U70C | | | | U100C | |
|----------------------|---------------|---------------|----------|-----------|-----------|------------|
| 参考型号 Reference No. | U70C/200 | U70CN/200 | U70C/190 | U70CN/190 | U100C/210 | U100CN/210 |
| 产品型号 | XDP(2)-70C | XDP(2)-70CN | XDP1-70C | XDP1-70CN | XDP-100C | XDP-100CN |
| 工厂代号 | 24075(24073A) | 24076(24074A) | 24073 | 24074 | 24077 | 24078 |
| 额定机电破坏负荷(kN) | 70 | | | | 100 | |
| 图 号 | 1 | 2 | 1 | 2 | 1 | 2 |
| 绝缘子公称直径 (mm) | 160/170 | 160/170 | 170 | 170 | 170 | 170 |
| 公称结构高度 (mm) | 200 | 200 | 190 | 190 | 210 | 210 |
| 公称爬电距离 (mm) | 160/170 | 160/170 | 170 | 170 | 170 | 170 |
| 连接标记 | 16C | 16C | 16C | 16C | 16C | 16C |
| 悬挂方式 | 悬垂 | 耐张 | 悬垂 | 耐张 | 悬垂 | 耐张 |
| 额定机电破坏负荷(kN) | 70 | 70 | 70 | 70 | 100 | 100 |
| 1 小时机电负荷(kN) | 52.5 | 52.5 | 52.5 | 52.5 | 75 | 75 |
| 例行拉伸负荷(kN) | 35 | 35 | 35 | 35 | 50 | 50 |
| 间隙距离调整范围 (mm) | 10~30 | 10~30 | 10~30 | 10~30 | 10~30 | 10~30 |
| 20mm 间隙工频干放电电压(kV) | 8~30 | 8~30 | 8~30 | 8~30 | 8~30 | 8~30 |
| 20mm 间隙工频湿放电电压(kV) | 8~30 | 8~30 | 8~30 | 8~30 | 8~30 | 8~30 |
| 无间隙工频干闪络电压(kV) | 45 | 45 | 45 | 45 | 45 | 45 |
| 无间隙工频湿闪络电压(kV) | 25 | 25 | 25 | 25 | 25 | 25 |
| 无间隙工频 1min 湿耐受电压(kV) | 30 | 30 | 30 | 30 | 30 | 30 |
| 工频击穿电压有效值(kV) | 110 | 110 | 110 | 110 | 110 | 110 |
| 恢复电压(kV) | 2.5 | 2.5 | 2.5 | 2.5 | 2.5 | 2.5 |
| 电感性电流 A (间隙 15mm) | 35 | 35 | 35 | 35 | 35 | 35 |
| 电容性电流 A (间隙 15mm) | 20 | 20 | 20 | 20 | 20 | 20 |
| 电弧熄灭时间 (s) | <1 | <1 | <1 | <1 | <1 | <1 |
| 耐弧性能 (2 次) (kA·S) | 10/0.2 | 10/0.2 | 10/0.2 | 10/0.2 | 10/0.2 | 10/0.2 |
| 重量(kg) | 4.7 | 4.7 | 4.7 | 4.7 | 5.6 | 5.6 |

直流防污型 (钟罩型) DC Anti-Pollution Type (Under Rib)

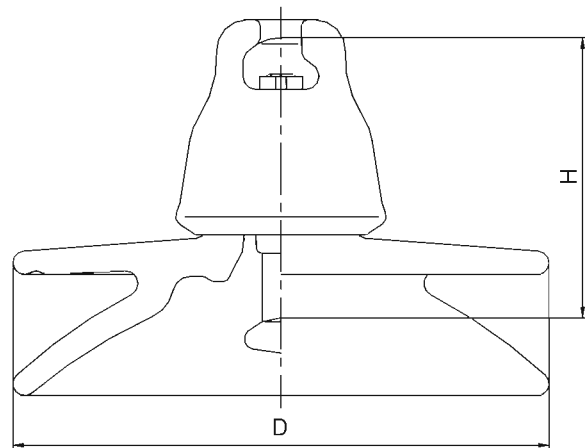


| IEC Designation | U160BLP | U210BP | U240BP | U300BP | | U420B | |
|--------------------------------------|-----------------------|-------------|-------------|-------------|----------|-------------|------|
| 参考型号 Reference No. | U160BP/170H | U210BP/170H | U240BP/170H | U300BP/195H | | U420BP/205H | |
| 产品型号 Type | XZP-160 | XZP-210 | XZP-240 | XZP-300 | XZP2-300 | XZP-420 | |
| 工厂代号 Cat No. | 24401 | 24402 | 24403 | 24404 | 24405 | 24406 | |
| 额定机电破坏负荷(kN) Rated M&E Failing Load | 160 | 210 | 240 | 300 | 300 | 420 | |
| 公称直径 D(mm) Nominal Diameter | 330 | 330 | 330 | 340 | 390 | 340 | |
| 公称结构高度 H(mm) Nominal Unit Spacing | 170 | 170 | 170 | 195 | 195 | 205 | |
| 公称爬电距离(mm) Nominal Creepage Distance | 560 | 560 | 560 | 570 | 635 | 560 | |
| 连接标记(mm) Ball & Socket Size | 20 | 20 | 24 | 24 | 24 | 28 | |
| 锁紧销型式 Locking Device | R | R | R | R | R | R | |
| 逐个拉伸负荷(kN) Routine Tensile Load | 80 | 105 | 120 | 150 | 150 | 210 | |
| 耐受电压(kV) Withstand Voltage | 直流 DC | 干 Dry | ±140 | ±140 | ±140 | ±140 | ±140 |
| | | 湿 Wet | ±55 | ±55 | ±55 | ±55 | ±60 |
| | 雷电冲击 Critical Impulse | 140 | 140 | 140 | 140 | 150 | 150 |
| 直流击穿电压(kV) DC Puncture Voltage | +210 | +210 | +210 | +210 | +225 | +210 | |
| 重量(kg) Net Weight(approx.) | 13.7 | 15.2 | 15.3 | 17.5 | 19.7 | 20.4 | |

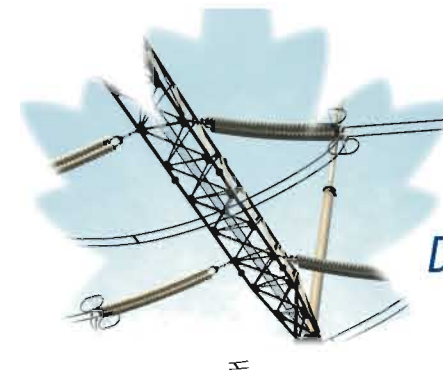
www.suz-insulators.com



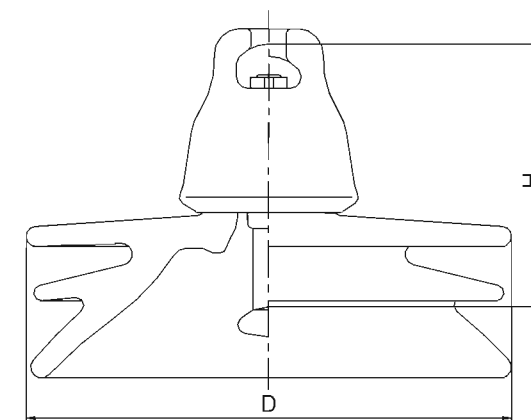
直流防污型 (双伞型)
DC Anti-Pollution Type (Two Outer Rib)



| IEC Designation | U160BLP | U210BP | U240BP | U300BP | U420B | | |
|--------------------------------------|-----------------------|-------------|-------------|-------------|-------------|------|------|
| 参考型号 Reference No. | U160BP/170D | U210BP/170D | U240BP/170D | U300BP/195D | U420BP/205D | | |
| 产品型号 Type | XZWP1-160 | XZWP1-210 | XZWP1-240 | XZWP1-300 | XZWP1-420 | | |
| 工厂代号 Cat No. | 24411 | 24412 | 24413 | 24414 | 24415 | | |
| 额定机电破坏负荷(kN) Rated M&E Failing Load | 160 | 210 | 240 | 300 | 420 | | |
| 公称直径 D(mm) Nominal Diameter | 360 | 360 | 360 | 360 | 400 | | |
| 公称结构高度 H(mm) Nominal Unit Spacing | 170 | 170 | 170 | 195 | 205 | | |
| 公称爬电距离(mm) Nominal Creepage Distance | 545 | 545 | 545 | 545 | 600 | | |
| 连接标记(mm) Ball & Socket Size | 20 | 20 | 24 | 24 | 28 | | |
| 锁紧销型式 Locking Device | R | R | R | R | R | | |
| 逐个拉伸负荷(kN) Routine Tensile Load | 80 | 105 | 120 | 150 | 210 | | |
| 耐受电压(kV) Withstand Voltage | 直流 DC | 干 Dry | ±140 | ±140 | ±140 | ±140 | ±150 |
| | | 湿 Wet | ±55 | ±55 | ±55 | ±55 | ±60 |
| | 雷电冲击 Critical Impulse | 140 | 140 | 140 | 140 | 150 | |
| 直流击穿电压(kV) DC Puncture Voltage | +210 | +210 | +210 | +210 | +225 | | |
| 重量(kg) Net Weight(approx.) | 13.5 | 13.2 | 13.7 | 15.6 | 20.5 | | |



直流防污型 (三伞型)
DC Anti-Pollution Type (Three Outer Rib)



| IEC Designation | U160BLP | U210BP | U240BP | U300BP | U420B | | |
|--------------------------------------|-----------------------|-------------|-------------|-------------|-------------|------|------|
| 参考型号 Reference No. | U160BP/170T | U210BP/170T | U240BP/170T | U300BP/195T | U420BP/205T | | |
| 产品型号 Type | XZWP2-160 | XZWP2-210 | XZWP2-240 | XZWP2-300 | XZWP2-420 | | |
| 工厂代号 Cat No. | 24421 | 24422 | 24423 | 24424 | 24425 | | |
| 额定机电破坏负荷(kN) Rated M&E Failing Load | 160 | 210 | 240 | 300 | 420 | | |
| 公称直径 D(mm) Nominal Diameter | 340 | 340 | 340 | 390 | 390 | | |
| 公称结构高度 H(mm) Nominal Unit Spacing | 170 | 170 | 170 | 195 | 205 | | |
| 公称爬电距离(mm) Nominal Creepage Distance | 560 | 560 | 560 | 635 | 635 | | |
| 连接标记(mm) Ball & Socket Size | 20 | 20 | 24 | 24 | 28 | | |
| 锁紧销型式 Locking Device | R | R | R | R | R | | |
| 逐个拉伸负荷(kN) Routine Tensile Load | 80 | 105 | 120 | 150 | 210 | | |
| 耐受电压(kV) Withstand Voltage | 直流 DC | 干 Dry | ±140 | ±140 | ±140 | ±150 | ±150 |
| | | 湿 Wet | ±55 | ±55 | ±55 | ±60 | ±60 |
| | 雷电冲击 Critical Impulse | 140 | 140 | 140 | 150 | 150 | |
| 直流击穿电压(kV) DC Puncture Voltage | +210 | +210 | +210 | +225 | +225 | | |
| 重量(kg) Net Weight(approx.) | 13.7 | 15.9 | 16.2 | 20.0 | 22.8 | | |

www.suz-insulators.com